

Microsoft PowerPoint XP

HOW TO WORK WITH VIEW	5
How to view the Slide Sorter	5
How to view the normal page display	7
How to view the Slide Master	9
How to insert new slide master	11
How to insert New Title Master	12
How to delete the slide master	13
How to preserve master page	14
How to rename the master page	15
How to master layout	16
How to close the Master View	17
How to show the Handout Master	19
How to show the positioning of 1-per-page handouts.....	21
How to show positioning of 2-per-page handouts.....	22
How to show positioning of 3-per-page handouts.....	23
How to show positioning of 4-per-page handouts.....	24
How to show positioning of 9-per-page handouts.....	25
How to show positioning of outline	26
How to show Notes Master.....	27
How to work with slide show	29
How to view the Notes Page	31
How to view Task Pane	33
How to show the ruler	34

HOW TO WORK WITH INSERT 36

How to insert the new slide.....	36
How to insert the slide number	37
How to insert the Date and Time.....	39
How to insert the Clip Art.....	40
How to insert the picture from file.....	42
How to insert Organization Chart	43
How to add the text in the Organization Chart.....	44
How to insert a new shape in the Organization Chart	45
How to select the layout.....	46
How to show the AutoShapes menu bar	47
How to insert the WordArt	48
How to insert the chart in the presentation	50
How to insert the Diagram.....	51
How to insert the text box.....	53
How to insert the Animation Schemes.....	54
How to insert the Slide Transition.....	56
How to insert the table.....	58
How to insert the movies file	60
How to insert the sound in the presentation	61

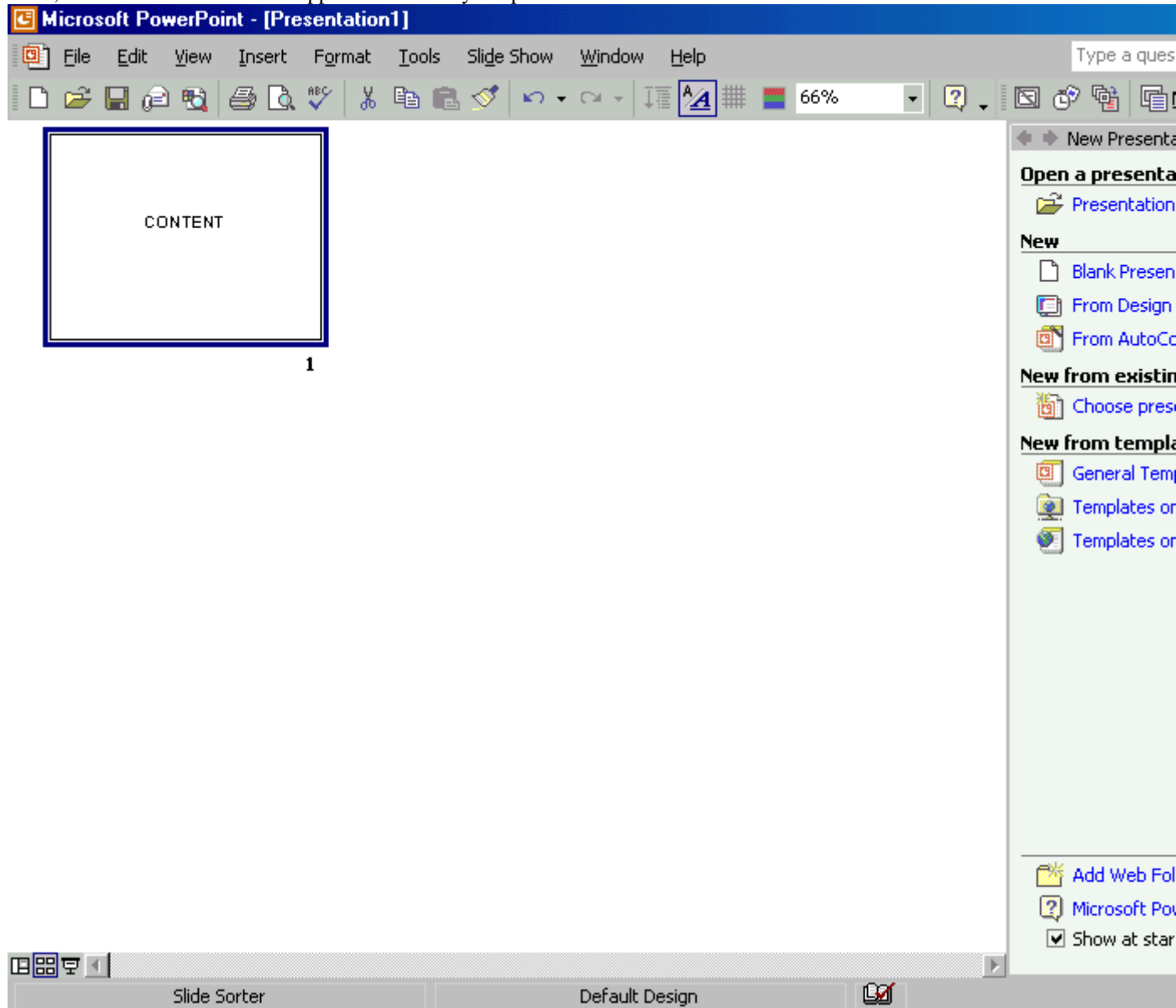
HOW TO WORK WITH DRAW 62

How to draw the line.....	62
How to draw the Arrow Line.....	63
How to draw the Double Arrow	64
How to draw the Curve	65
How to draw the Freeform	66
How to draw the Scribble.....	67
How to draw the Straight Connector	68
How to draw the Straight Arrow Connector.....	69

How to draw the Straight Double-Arrow Connector.....	70
How to draw the Elbow Connector.....	71
How to draw the Elbow Arrow Connector.....	72
How to draw the Elbow Double-Arrow Connector.....	73
How to draw the Curved Connector.....	74
How to draw the Curved Arrow Connector.....	75
How to draw the Curved Double-Arrow Connector.....	76
How to draw the Rectangle.....	77
How to draw the Parallelogram.....	78
How to draw the Trapezoid.....	79
How to draw the Diamond.....	80
How to draw the Rounded Rectangle.....	81
How to draw the Octagon.....	82
How to draw the Hexagon.....	83
How to draw the Can.....	84
How to draw the Cube.....	85
How to draw the Right Arrow.....	86
How to draw the Left Arrow.....	87
How to draw the Up Arrow.....	88
How to draw the Down Arrow.....	89
How to draw the Bent Arrow.....	90
How to draw the Left-Up Arrow.....	91
How to draw the Flowchart: Process.....	92
How to draw the Flowchart: Alternate Process.....	93
How to draw the starts and banners.....	94
How to draw the callouts.....	95

Step 3

Then, the Slide Sorter view will appear as shown by the picture below.

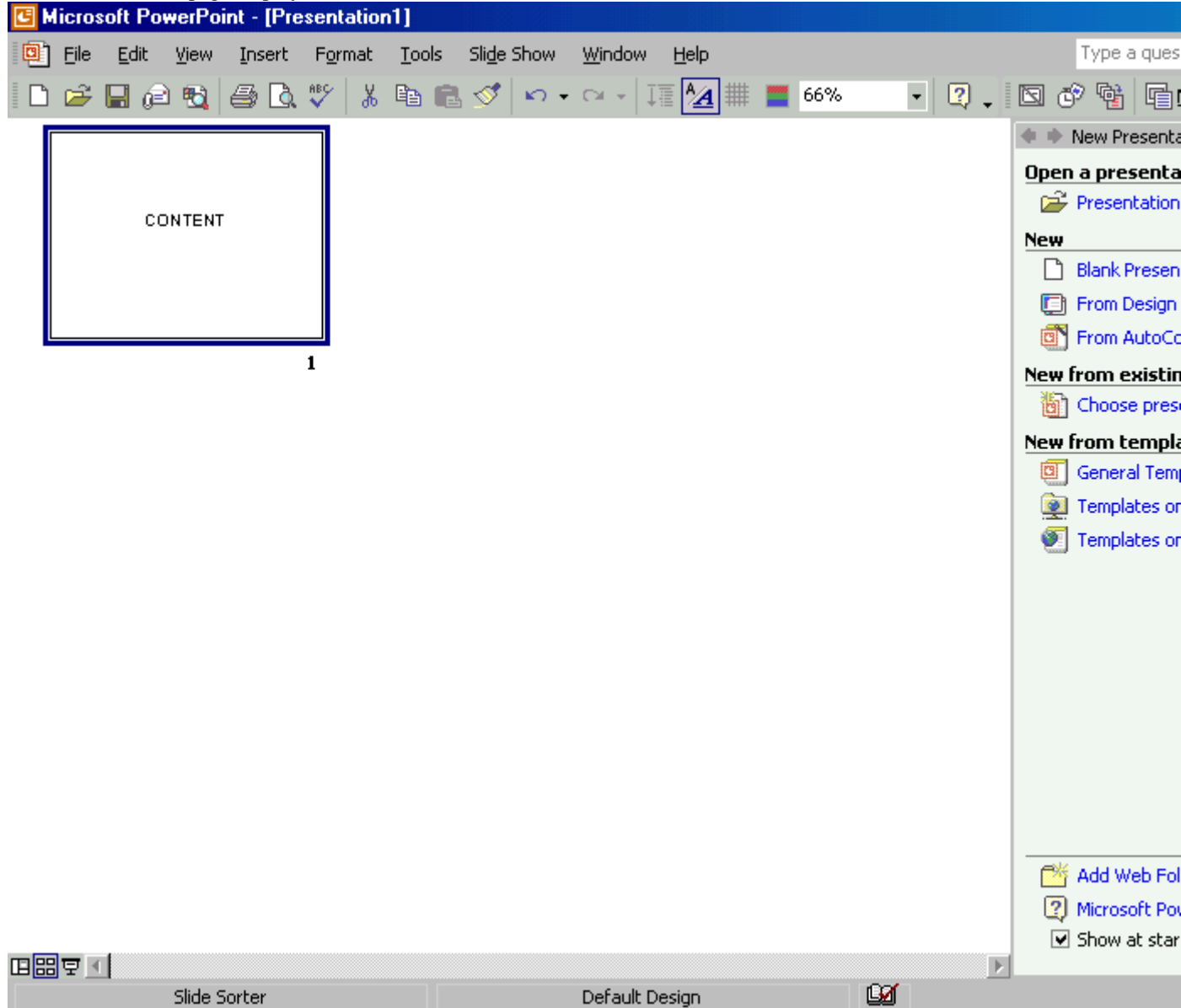


How to view the normal page display

To view the normal page display

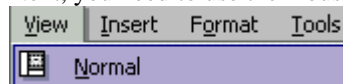
Step 1

To view the normal page display, it starts from the Slide Sorter view.



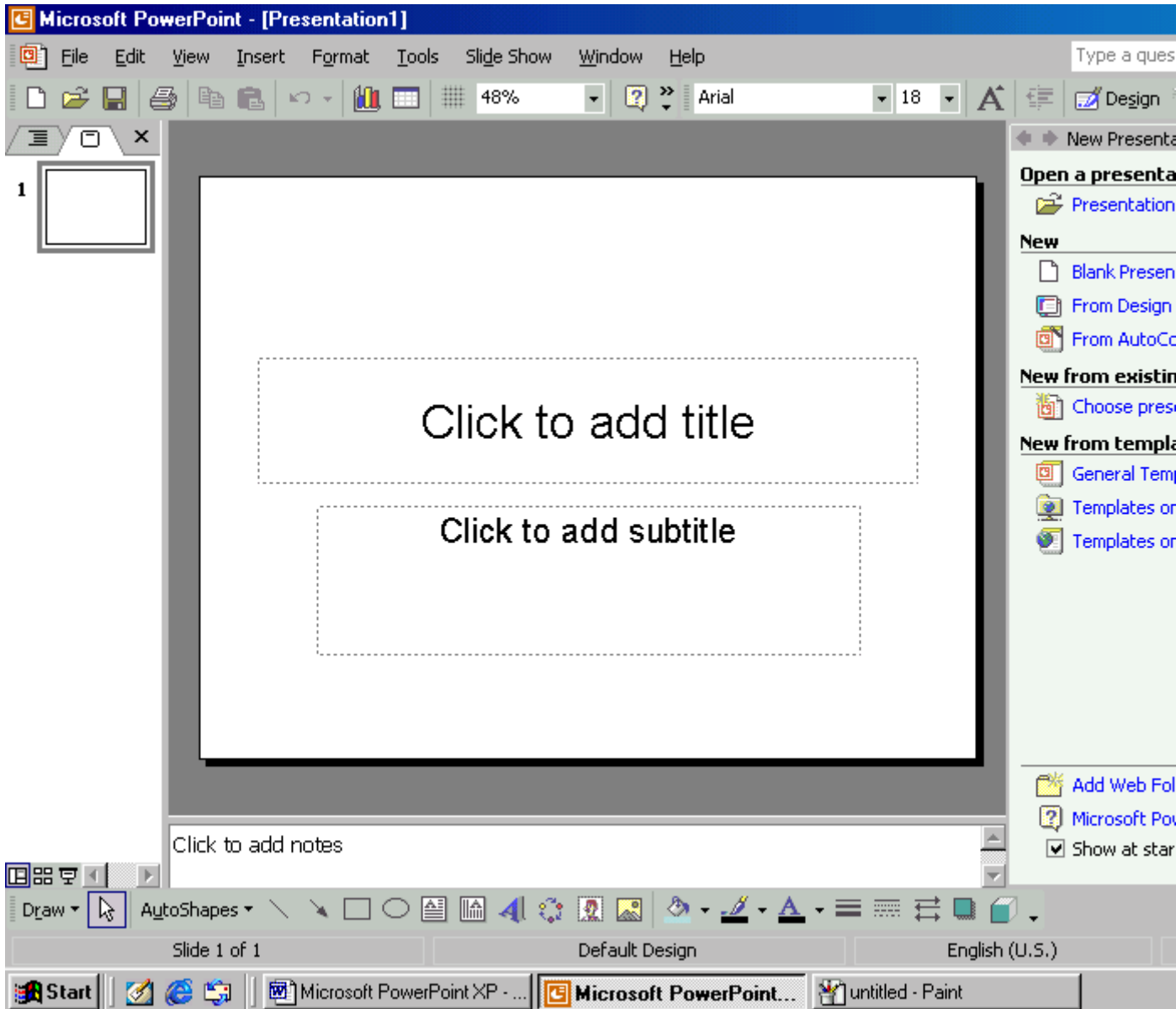
Step 2

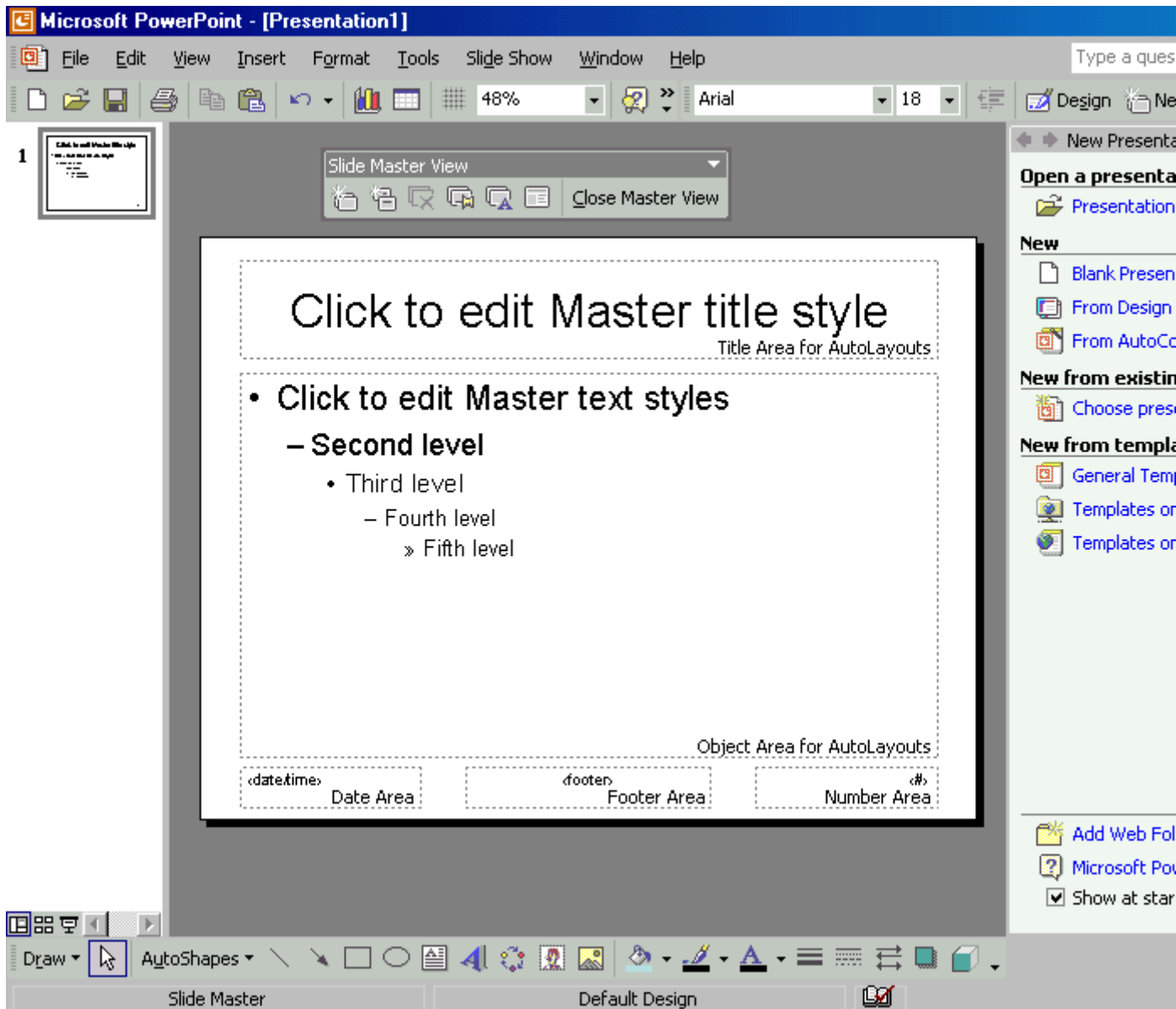
Next, you need to use the mouse to open the **View** menu and then click on the **Normal** command.



Step 3

After that the Normal viewing will appear on your screen.





How to insert new slide master

To insert new slide master

Step 1

To insert new slide master, you have to use the mouse to open the **View** menu and then open the **Master** sub menu. Later, you need to click on the **Slide Master** command.



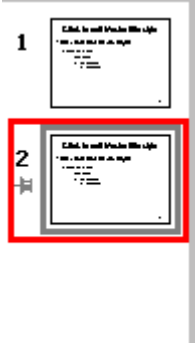
Step 2

After that, just click on the **Insert New Slide Master** command in the **Slide Master View** menu bar.



Step 3

Now you could see the new slide master appears on your screen as shown by the picture below.



How to insert New Title Master

To insert New Title Master

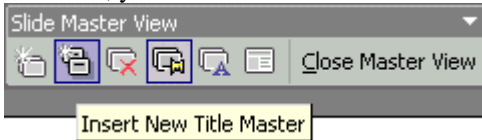
Step 1

To insert the new title master, you have to use the mouse to open the **View** menu and then open the **Master** sub menu. Later, just click on the **Slide Master** command.



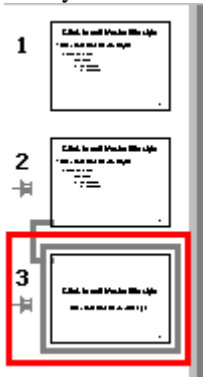
Step 2

After that, you need to click on the **Insert New Title Master** command in the **Slide Master** View menu.



Step 3

Now you could see the New Title Master appears on your screen as shown by the picture below.



How to delete the slide master

To delete the slide master

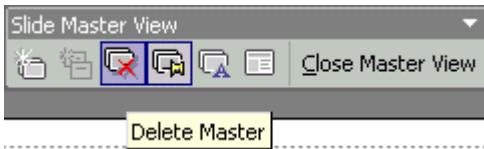
Step 1

If you wish to delete the slide master, first, you need to use the mouse to open the **View** menu and then open the **Master** sub menu. Later, you need to click on the **Slide Master** command.



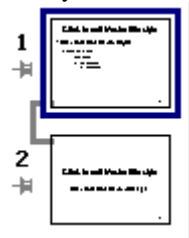
Step 2

After that, you must select the master page that you would like to delete. Next, click on the **Delete Master** command in the **Slide Master View** menu bar as shown by the picture below.



Step 3

Now you could see that the old master page is being deleted.



How to preserve master page

To preserve master page

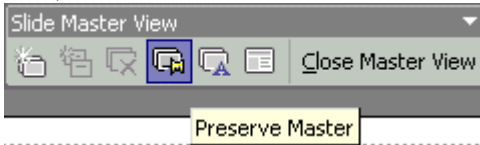
Step 1

To preserve the master page, first, you need to use the mouse to open the **View** menu and then open the **Master** sub menu. Later, just click on the **Slide Master** command.



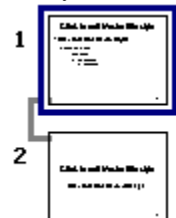
Step 2

Now, click on the **Preserve Master** in the **Slide Master View** menu.



Step 3

Now you could see that the Preserve Master page is being displayed.



How to rename the master page

To rename the master page

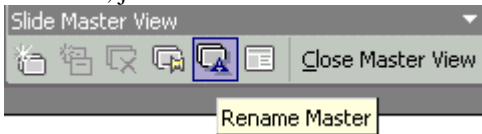
Step 1

To rename the master page, first you need to use the mouse to open the **View** menu and then open the **Master** sub menu. Later, click on the **Slide Master** command.



Step 2

After that, just click on the **Rename Master** command in the **Slide Master View** menu.



Step 3

Now, you could enter the name in the text box and then click the **Rename** button.



How to master layout

To master layout

Step 1

To master the layout, first you need to use the mouse to open the **View** menu and then open the **Master** the sub menu. Later, click on the **Slide Master** command.



Step 2

Now, just click on the **Master Layout** command in the **Slide Master View** menu as shown by the picture below.



Step 3

Next, you could start to select the Layout from the Master Layout windows.



How to close the Master View

To close the Master View

Step 1

To close the master view, first, you need to use the mouse to open the **View** menu and then open the **Master** sub menu. Then, just click on the **Slide Master** command.



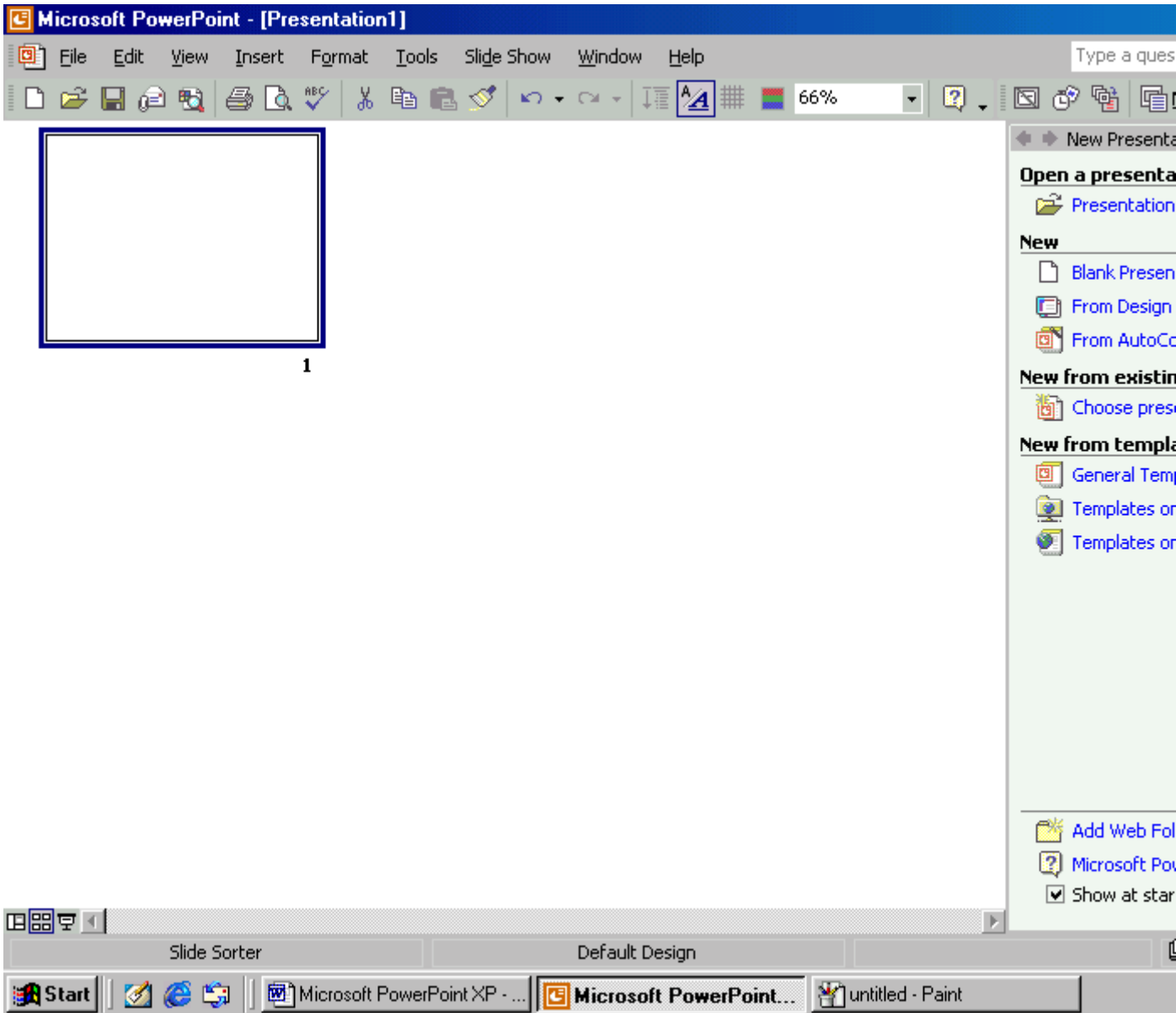
Step 2

Later, you must click on the **Close Master View** command in the **Slide Master View** menu.



Step 3

Now you could see the picture as shown below appears on your screen.

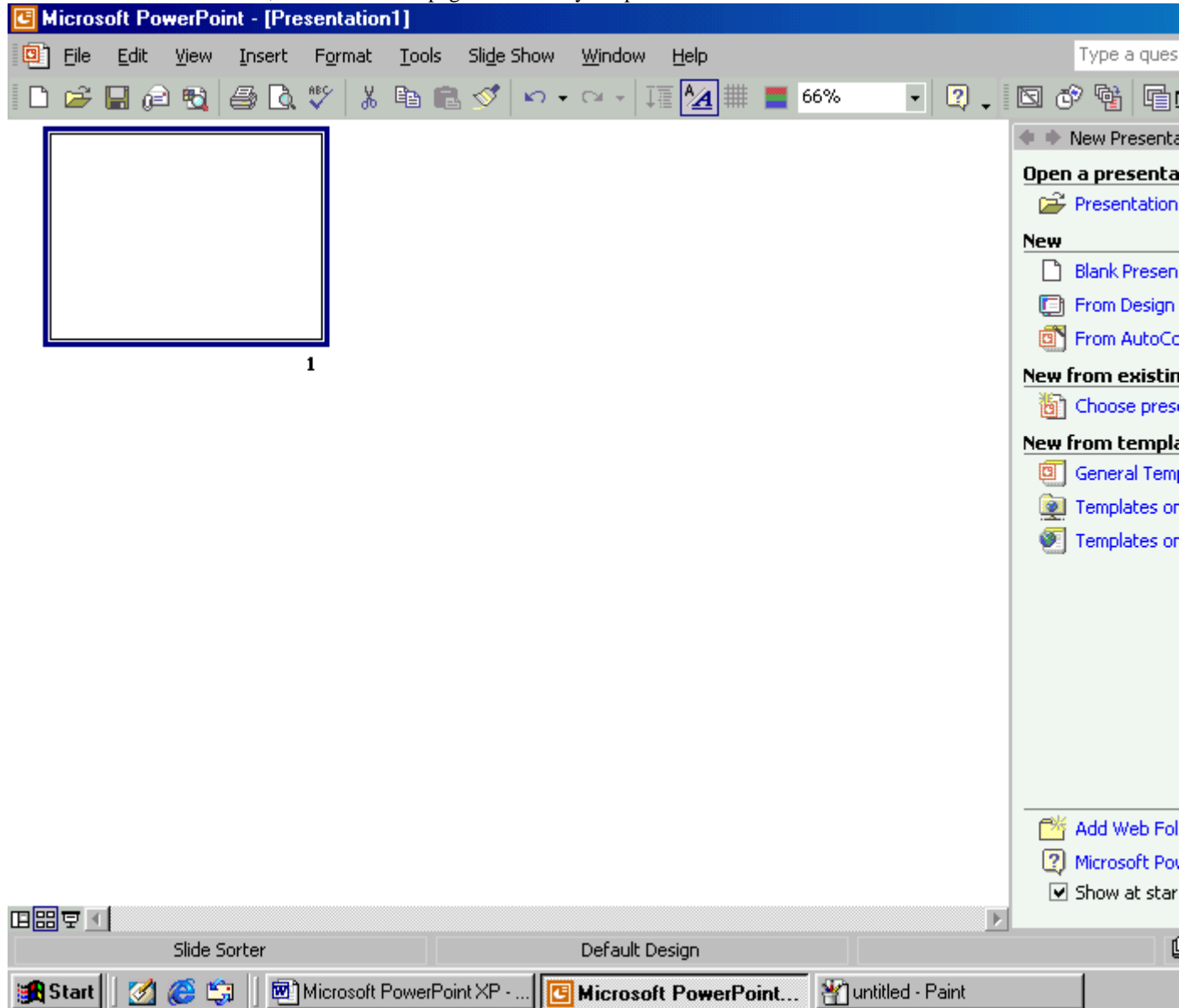


How to show the Handout Master

To show the Handout Master

Step 1

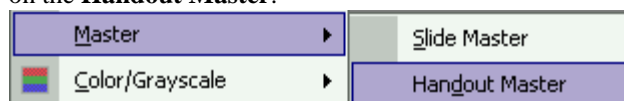
To show the Handout Master, it starts with the page as shown by the picture below.



1

Step 2

Next, you have to use the mouse to open the **View** menu and then open the **Master** menu. Later, just click on the **Handout Master**.



Step 3

Now you could see the Handout Master appears on your screen.

Header Area	Date Area
Footer Area	Number Area

How to show the positioning of 1-per-page handouts

To show the positioning of 1-per-page handouts

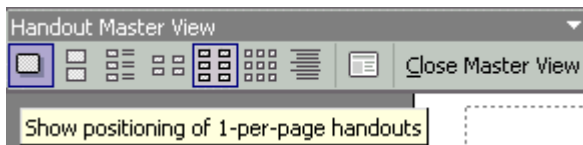
Step 1

To show the positioning of 1-per-page handouts, first, you need to use the mouse to open the **View** menu and then open the **Master** menu. Later, just click on the **Handout Master**.



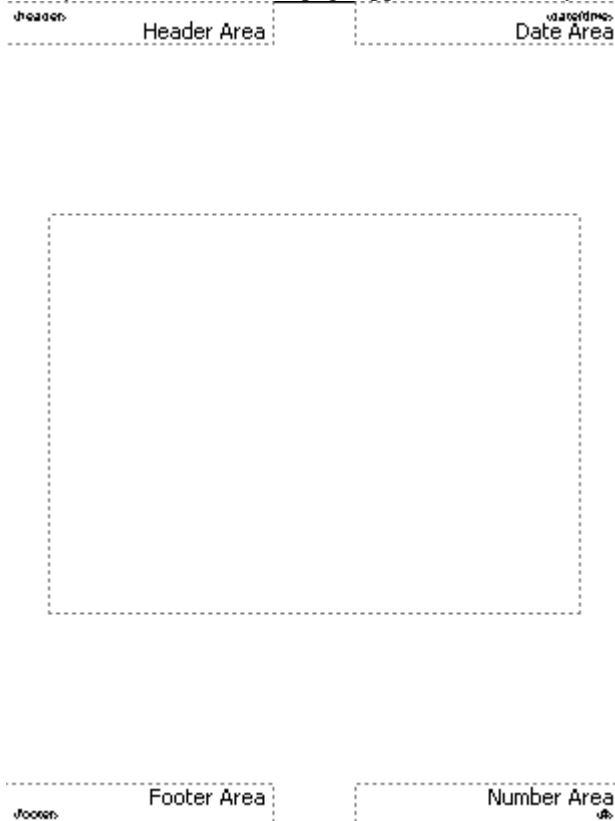
Step 2

Then, just click on the **Show positioning of 1-per-page handouts** option in the **Handout Master View** menu.



Step 3

Now you could see that the page appears as shown by the picture below.



How to show positioning of 2-per-page handouts

To show positioning of 2-per-page handouts

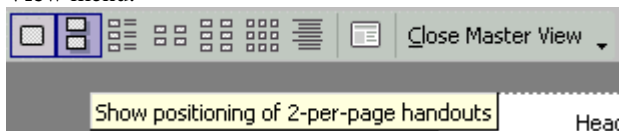
Step 1

If you wish to show positioning of 2-per-page handouts, first, you have to use the mouse to open the **View** menu and then open the **Master** menu. Later, click on the **Handout Master**.



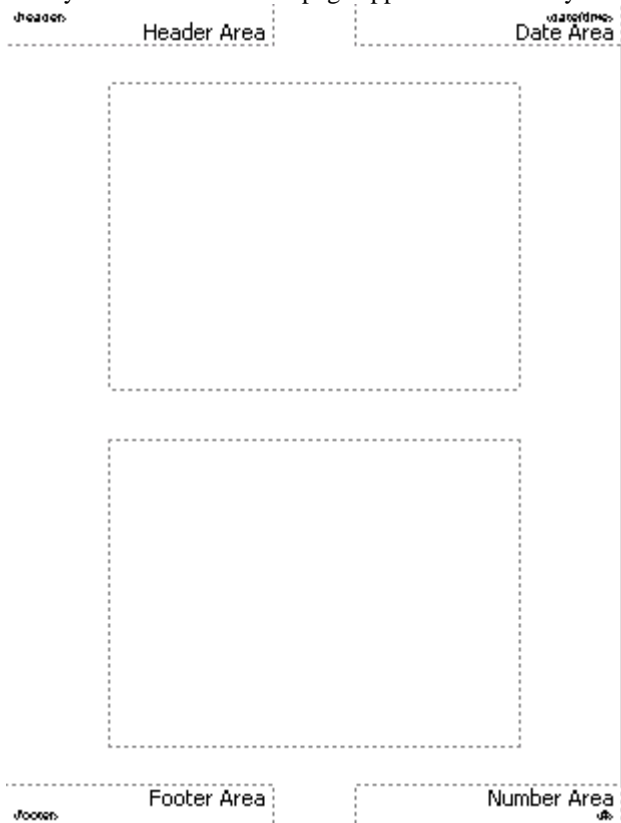
Step 2

Next, you must click on the **Show positioning of 2-per-page handouts** option in the **Handout Master View** menu.



Step 3

Now you could see that the page appears as shown by the picture below.



How to show positioning of 3-per-page handouts

To show positioning of 3-per-page handouts

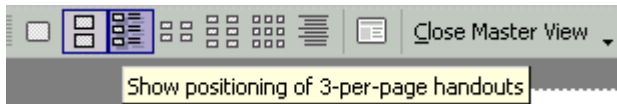
Step 1

To show positioning of 3-per-page handouts, first, you need to use the mouse to open the **View** menu and then open the **Master** menu. Later, you need to click on the **Handout Master**.



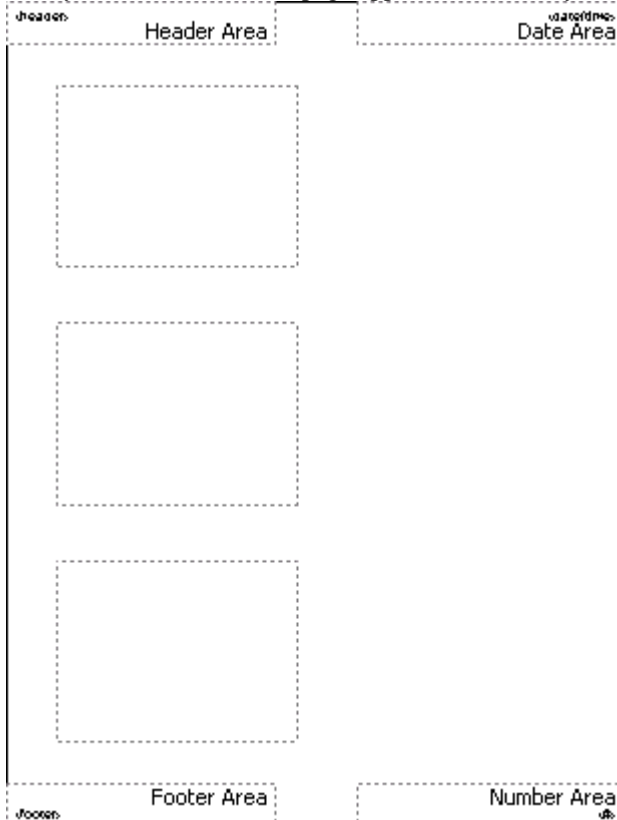
Step 2

Next, you must click on the **Show positioning of 3-per-page handouts** option in the **Handout Master View** menu.



Step 3

Now you could see that the page appears as shown by the picture below.

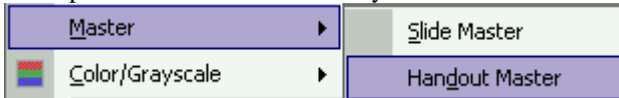


How to show positioning of 4-per-page handouts

To show positioning of 4-per-page handouts

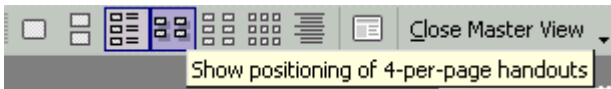
Step 1

To show positioning of 4-per-page handouts, you need to use the mouse to open the **View** menu first, and then open the **Master** menu. Now you need to click on the **Handout Master** option.



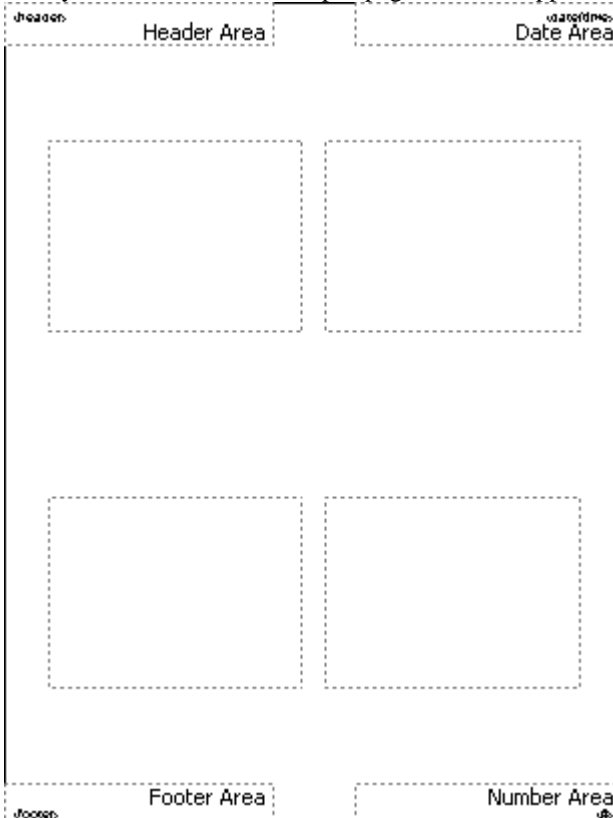
Step 2

Next, you need to click on the **Show positioning of 4-per-page handouts** option in the **Handout Master View** menu.



Step 3

Now you could see that the 4-per-page handouts appear as shown by the picture below.

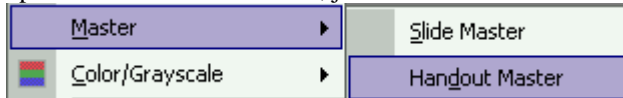


How to show positioning of 9-per-page handouts

To show positioning of 9-per-page handouts

Step 1

To show positioning of 9-per-page handouts, you must use the mouse to open the **View** menu and then open the **Master** menu. Later, just click on the **Handout Master** option.



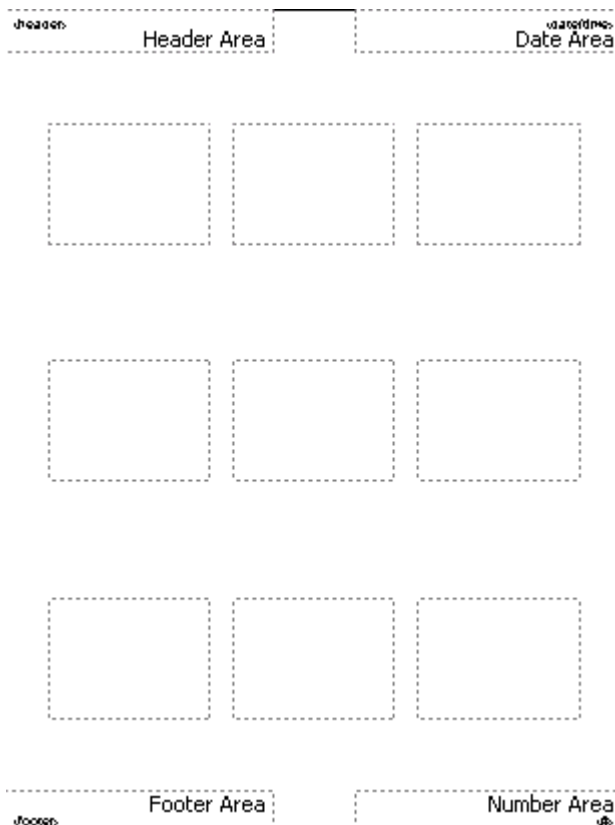
Step 2

Next, you have to click on the **Show positioning of 9-per-page handouts** in the **Handout Master View** menu.



Step 3

Now you could see that the 9-per-page handouts appear as shown by the picture below.



How to show positioning of outline

To show positioning of outline

Step 1

To show positioning of outline, first you have to use the mouse to open the **View** menu and then open the **Master** menu. Later, click on the **Handout Master**.



Step 2

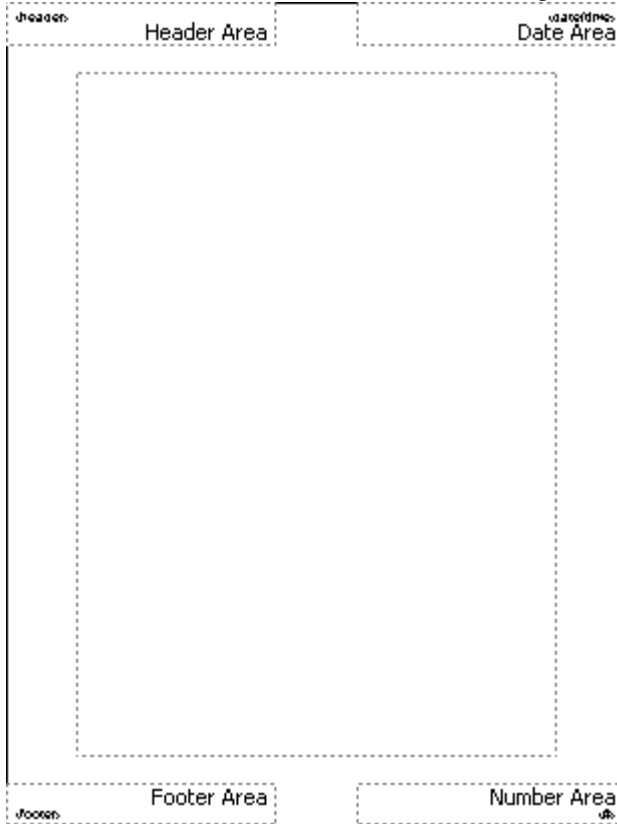
Next, click on the **Shoaaaaa**

How to show Notes Master

To show Notes Master

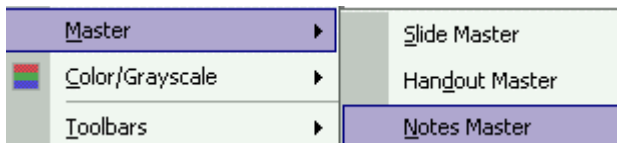
Step 1

To view the web folder window, it starts from the positioning of outline.



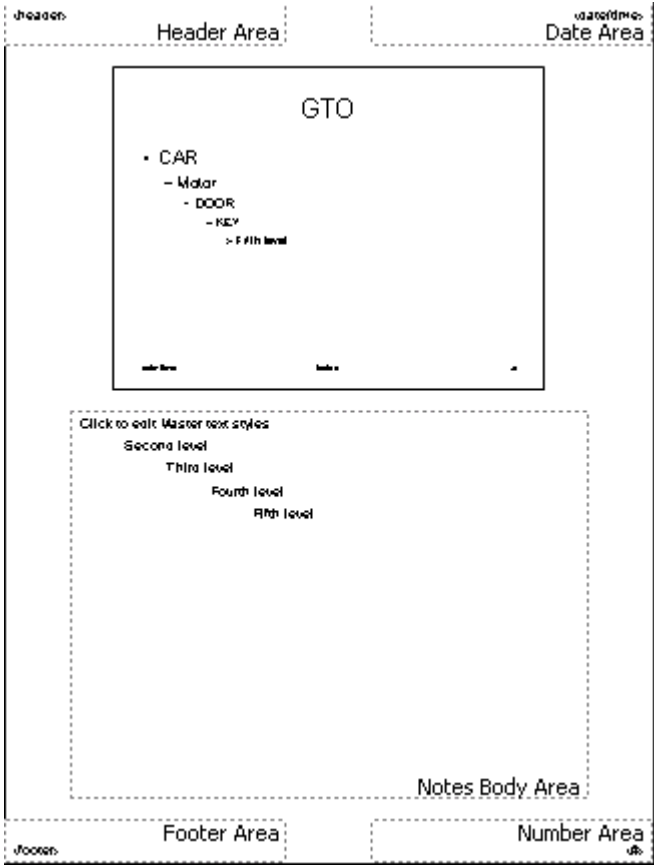
Step 2

Next, you have to use the mouse to open the **View** menu and then open the **Master** sub menu. Later, click on the **Notes Master**.



Step 3

Now you could see that the notes master page appears as shown by the picture below.

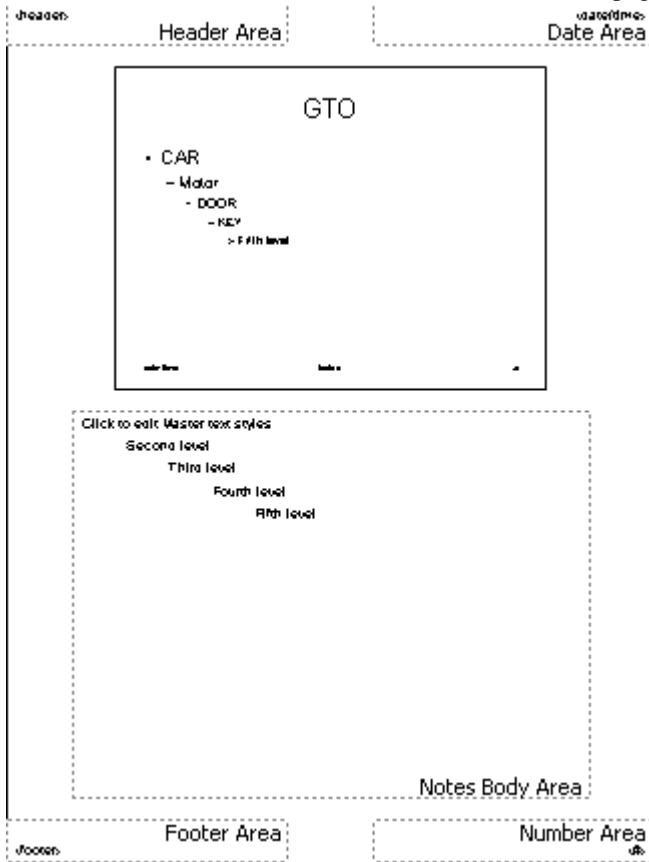


How to work with slide show

To work with slide show

Step 1

To work with slide show, it starts from the Notes Master page.



Step 2

Later, you need to use the mouse to open the **View** menu and then click on the **Slide Show** command.



Step 3

Now you could see that the slide show appears as shown by the picture below.

CONTENT

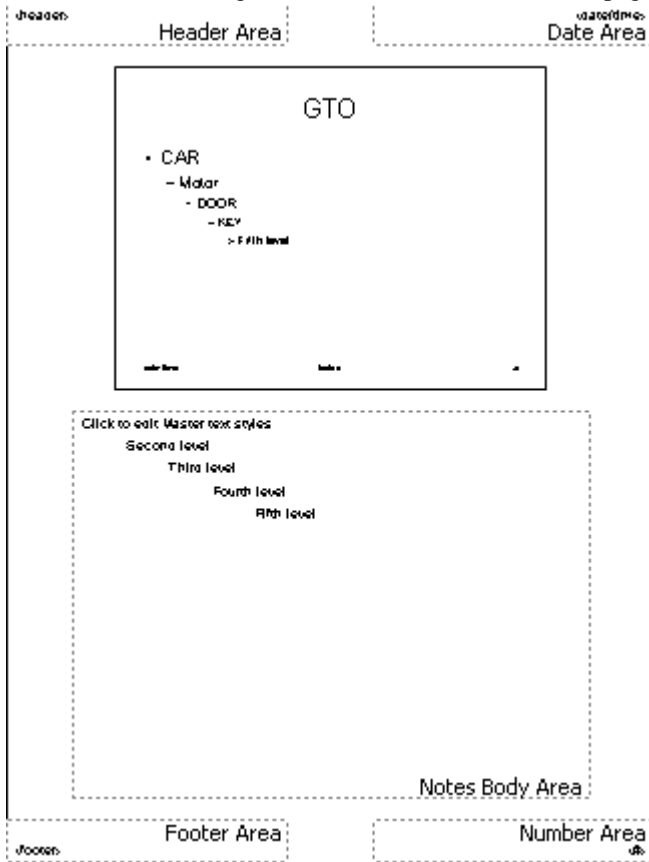
CAR
MOTOR
AIRPLANE

How to view the Notes Page

To view the Notes Page

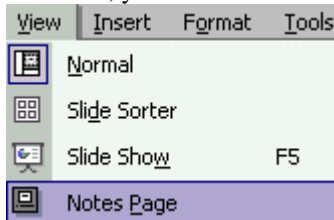
Step 1

To view the Notes Page, it starts from the Notes Master page.



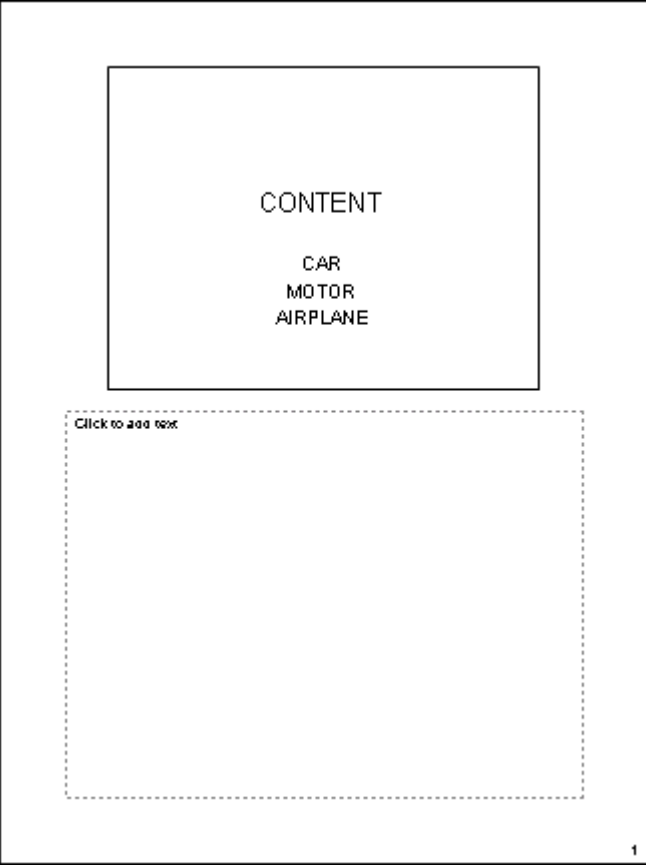
Step 2

After that, you need to use the mouse to open the **View** menu and then click on the **Notes Page** command.



Step 3

Now you could see that the page appears as shown by the picture below.

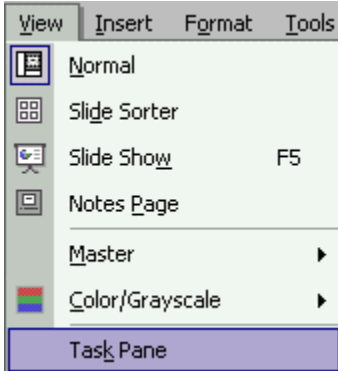


How to view Task Pane

To view Task Pane

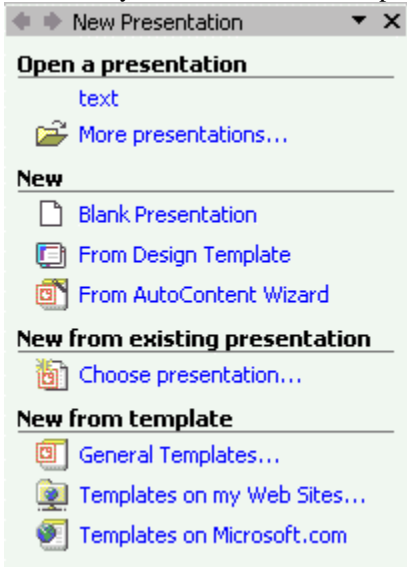
Step 1

To view Task Pane, first, you have to use the mouse to open the **View Menu** and then click on the **Task Pane** command.



Step 2

After that, you'll be able to see the picture as shown below.

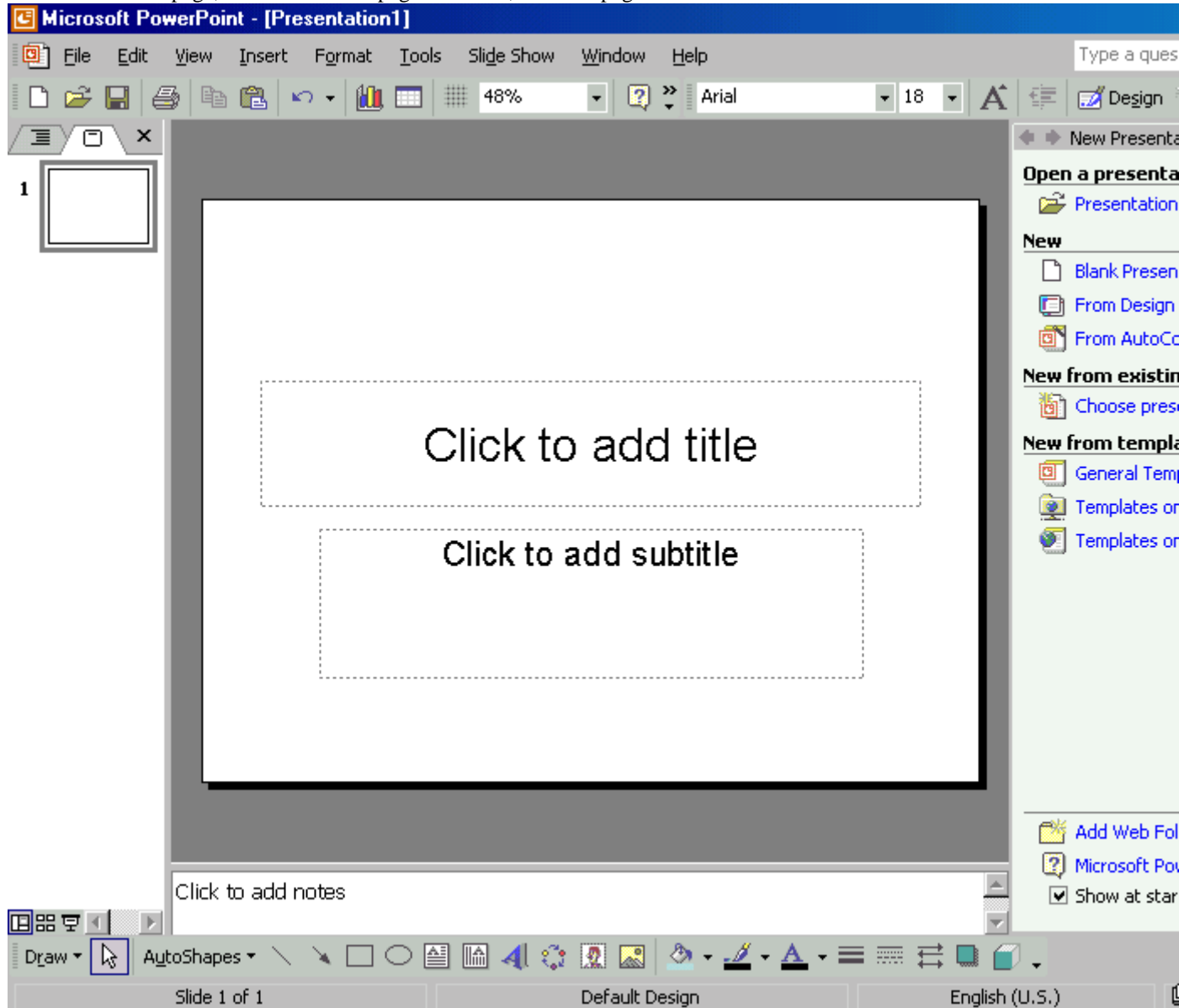


How to show the ruler

To show the ruler

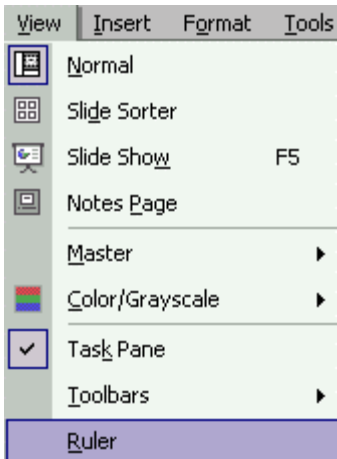
Step 1

To show the ruler page, it starts from the page as follow; No ruler page.



Step 2

Now you must use the mouse to open the **View** menu and then click on the **Ruler** command.



Step 3

Now you could see the page appears as shown by the picture below.



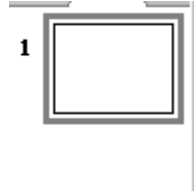
How to work with Insert

How to insert the new slide

To insert the new slide

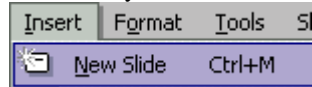
Step 1

To insert the new slide, it starts from the One Page.



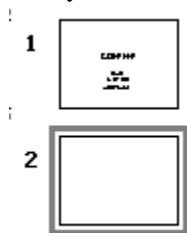
Step 2

After that, you need to use the mouse to open the **Insert** menu and then click on the **New Slide** command.



Step 3

Now you could see the two pages appear.

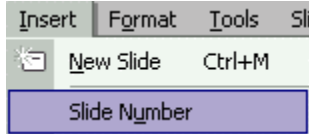


How to insert the slide number

To insert the slide number

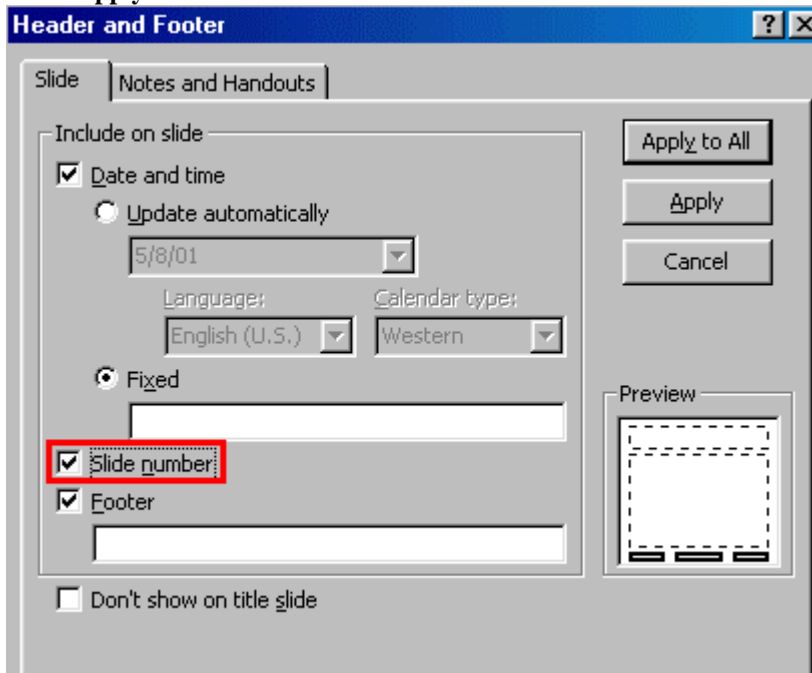
Step 1

To insert the slide number, first, you have to use the mouse to open the **Insert** menu and then click on the **Slide Number** command.



Step 2

Later, in the **Header and Footer** window, select the Slide number check box and then click the **Apply to All** or **Apply** button.



Step 3

Now you could see the pages appears as follow.

Click to add title

- Click to add text

2

How to insert the Date and Time

To insert the Date and Time

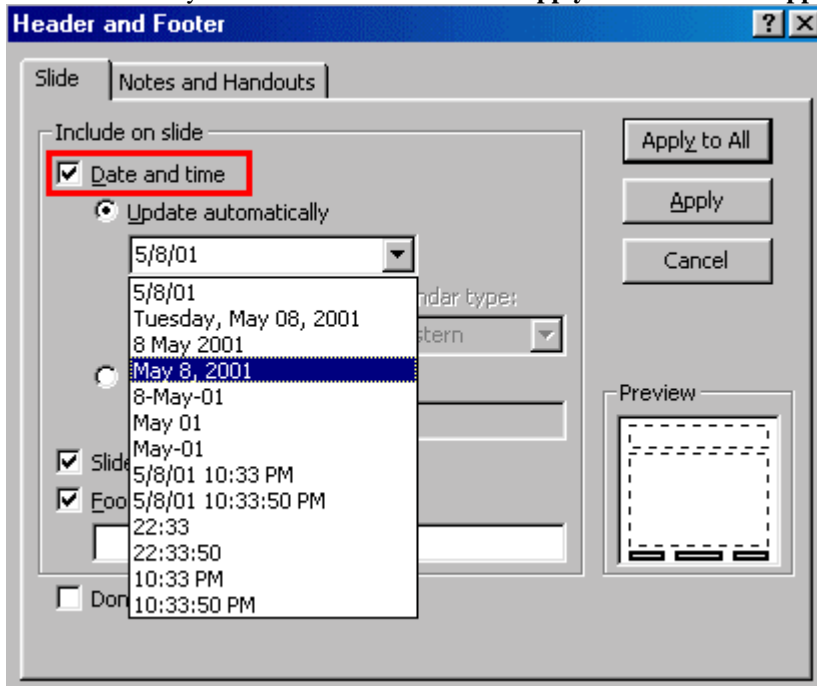
Step 1

To insert the Date and Time, first, you have to use the mouse to open the **Insert** menu and then click on the **Date and Time** command.



Step 2

Later, in the Header and Footer dialog box, select the Date and Time check box. Choose the type of the data or time that you want and then click on the **Apply to All** button or **Apply** button.



Step 3

Now you could see the date will be displayed in the document.

5/27/01

How to insert the Clip Art

To insert the Clip Art

Step 1

To insert the clip art, first you have to use the mouse to open the **Insert menu** and then click on the **Picture** sub menu. Later, just click on the **Clip Art** command.



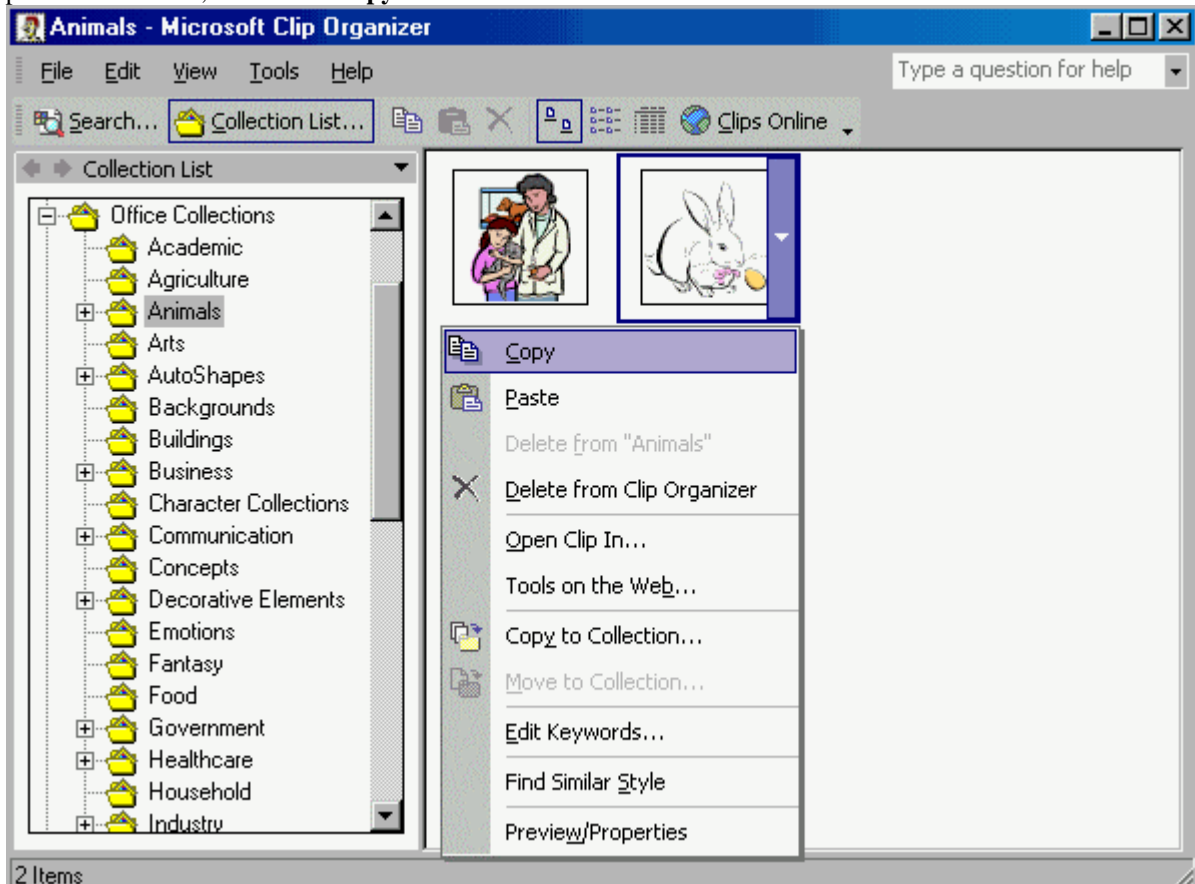
Step 2

Now, just click on the **Clip Organizer** command as shown by the picture below.



Step 3

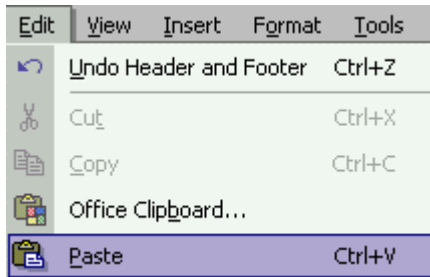
Then, in the **Microsoft Clip Organizer** window, you must select the picture that you want to insert in the presentation. Next, choose the **Copy** command in the menu.



Step 4

After that, you need to place the insertion point to where you would like to paste the picture.

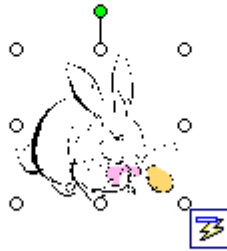
Choose *Edit>Paste*.



Step 5

Finally, you could see the picture below appears on your screen.

Click to add title



Tuesday, May 09, 2001

2

How to insert the picture from file

To insert the picture from file

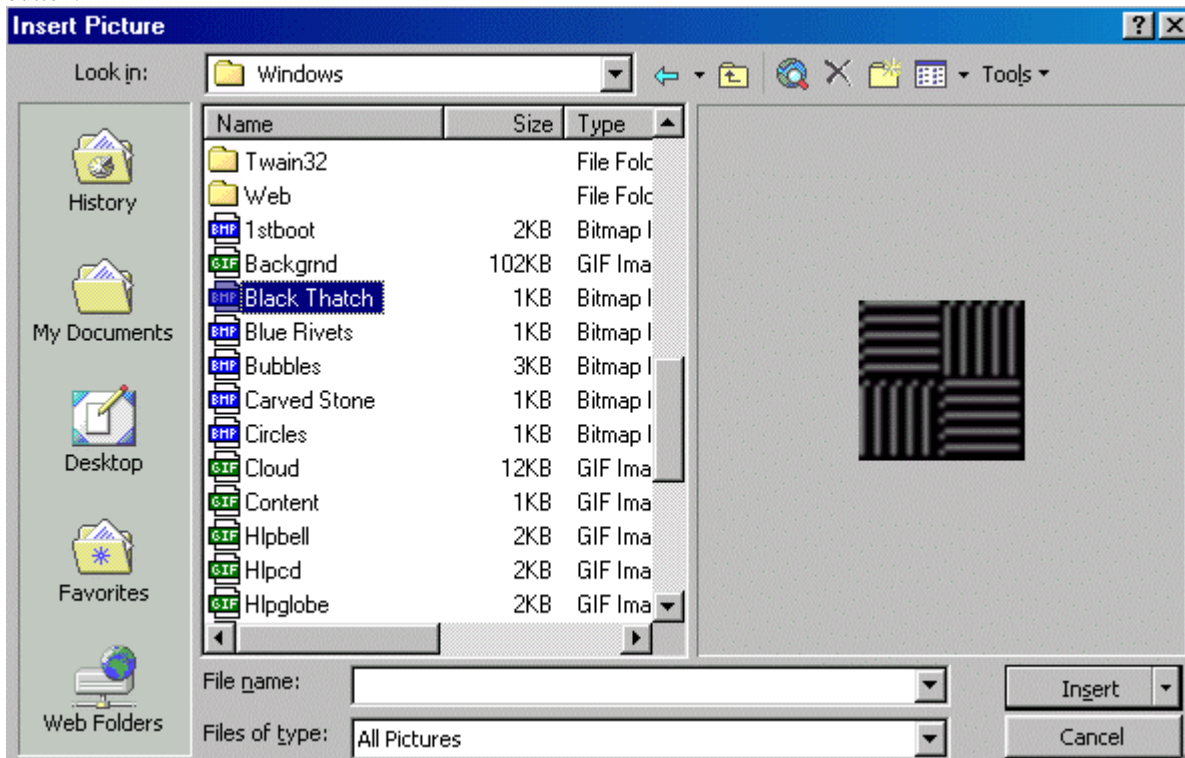
Step 1

To insert the picture from the file, first, you have to use the mouse to open **Insert** menu and then click on the **Picture** sub menu. Later, you need to click on the **From File** command.



Step 2

Now, you must select the picture that you want to insert in the presentation and then click on the **Insert** button.



Step 3

Finally, you could see the picture below appears on your screen.



How to insert Organization Chart

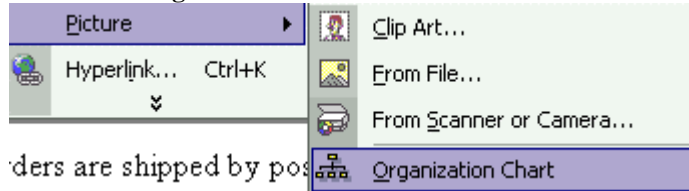
To insert Organization Chart

Step 1

To insert the organization chart, first, you have to place the insertion point in the document, to where you would like to insert the **Organization Chart**.

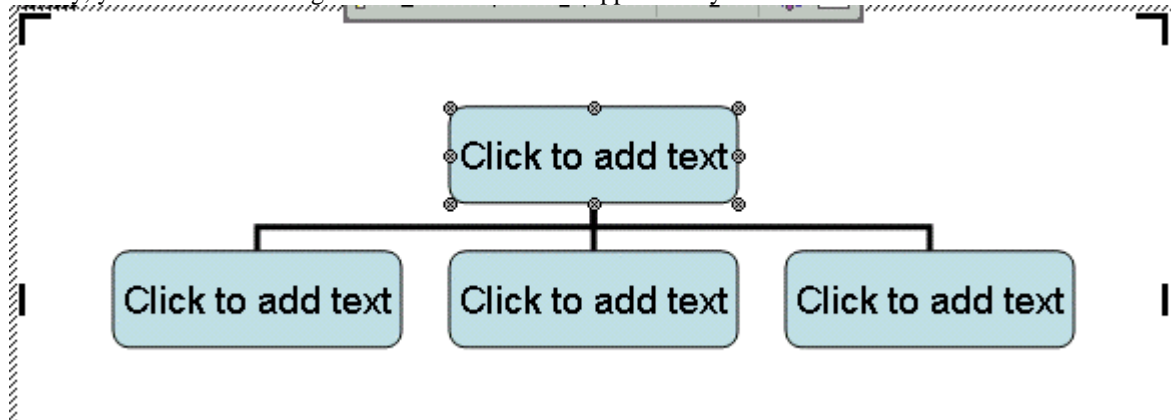
Step 2

After that, you have to use the mouse to open the **Insert** menu and then open the **Picture** sub menu. Later, click on the **Organization Chart**.



Step 3

Finally, you could see the organization chart as below appears on your screen.



How to add the text in the Organization Chart

To add the text in the Organization Chart

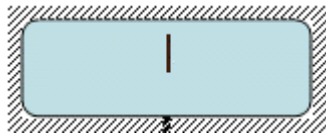
Step 1

To add the text in the organization chart, first you have to select the shape that you want to insert in the text.



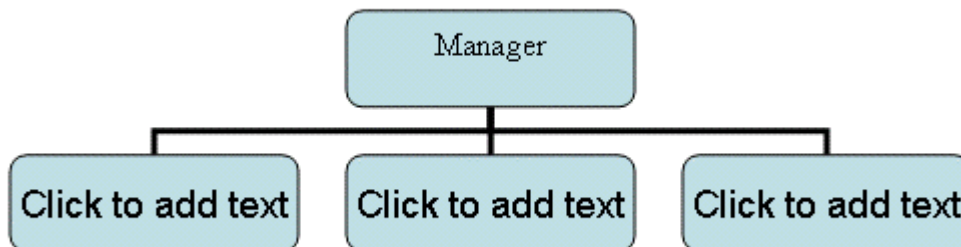
Step 2

Now, you have to move the mouse to the shape which you want to add the text and then click on the mouse button.



Step 3

Finally, you can start entering the words in the shape box.

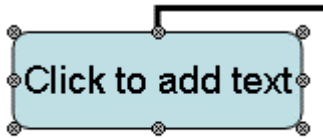


How to insert a new shape in the Organization Chart

To insert a new shape in the Organization Chart

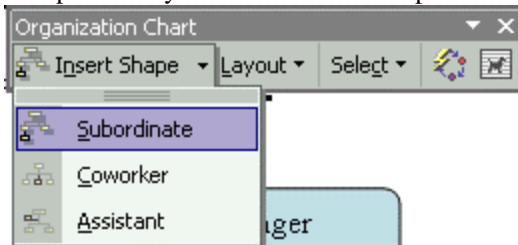
Step 1

To insert a new shape in the organization chart, first, you have to place the insertion point to where you would like to insert the shape in the Organization chart.



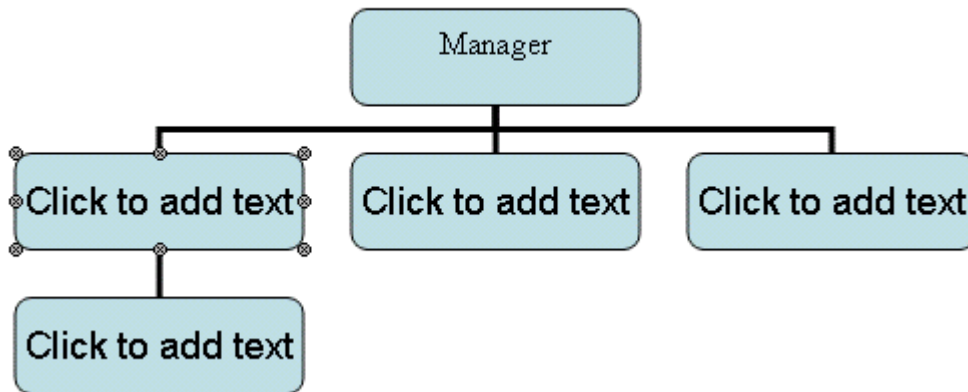
Step 2

Then, you need to click on the **New Shape** command in the **Organization Chart** menu bar and then select the option that you want to add the shape.



Step 3

Finally, you could see the organization chart as below appears on your screen.

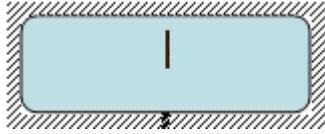


How to select the layout

To select the layout

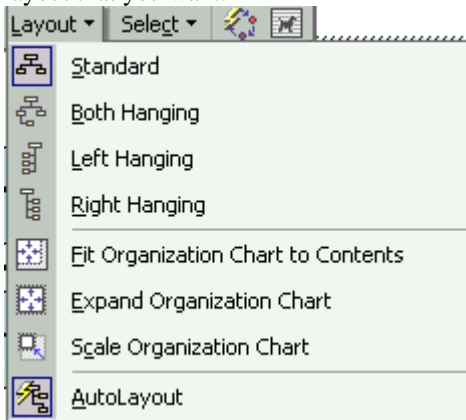
Step 1

To select the layout, first you must select the shape that you would like to change its layout.



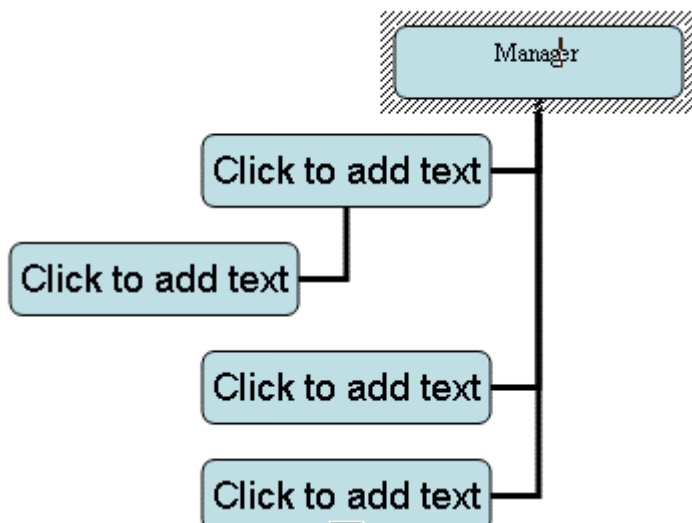
Step 2

Later, you need to move the mouse to the Layout in the Organization Chart menu bar and then select the layout that you want.



Step 3

Finally, you could see the organization chart below appears on your screen, in left hanging.



How to show the AutoShapes menu bar

To show the AutoShapes menu bar

Step 1

To show the AutoShapes menu bar, first, you have to use the mouse to open the **Insert** menu and then open the **Picture** sub menu. Later, you need to click on the **AutoShapes** command.



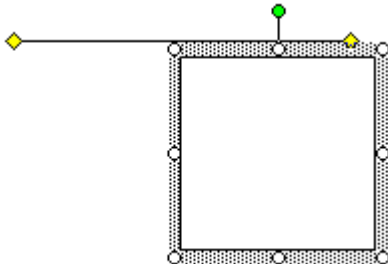
Step 2

After that, you need to use the mouse to open the **Callout** menu and then click the **Line Callout 1**.



Step 3

Finally, you have to use the mouse to drag and draw the Line Callout.

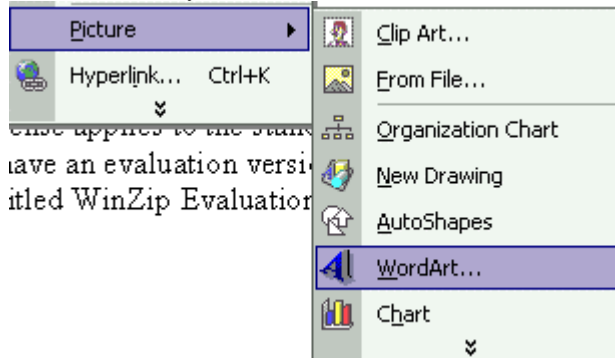


How to insert the WordArt

To insert the WordArt

Step 1

To insert the WordArt, you need to use the mouse to open the **Insert** menu first and then open the **Picture** sub menu. Later you need to click on the **WordArt** command.



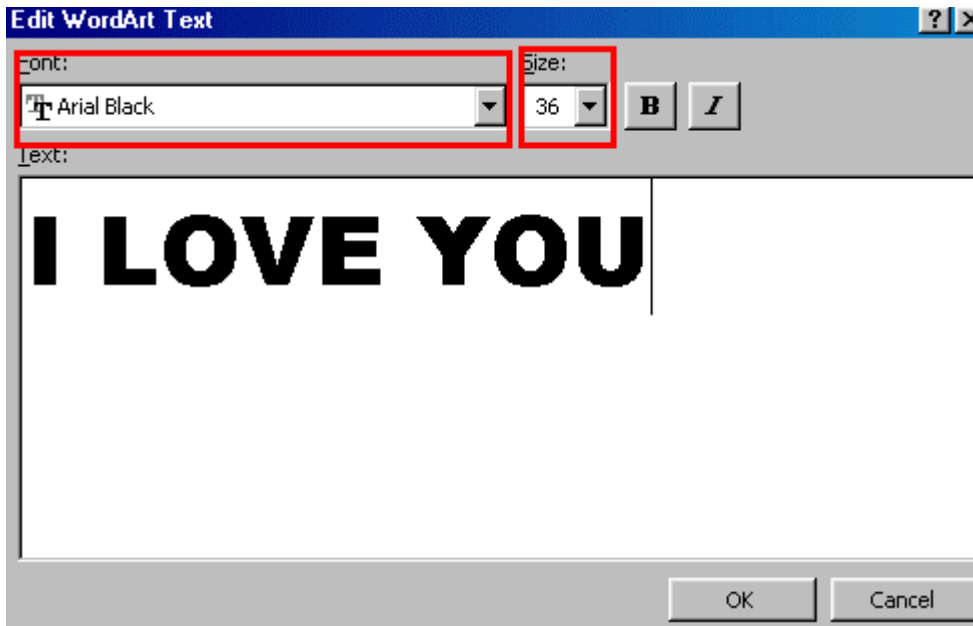
Step 2

Now you can select the pattern that you would like to choose.



Step 3

Next, you could start entering the text that you want. You could also change the Font type and the Font size.



Step 4

You'll be able to see the picture below when you have finished changing the font type and size.

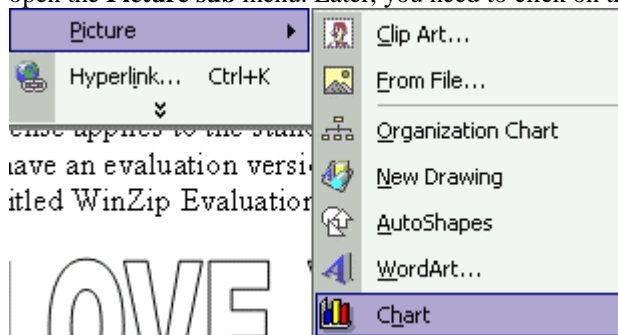
I LOVE YOU

How to insert the chart in the presentation

To insert the chart in the presentation

Step 1

To insert the chart in the presentation, first, you have to use the mouse to open the **Insert** menu and then open the **Picture** sub menu. Later, you need to click on the **Chart** command.



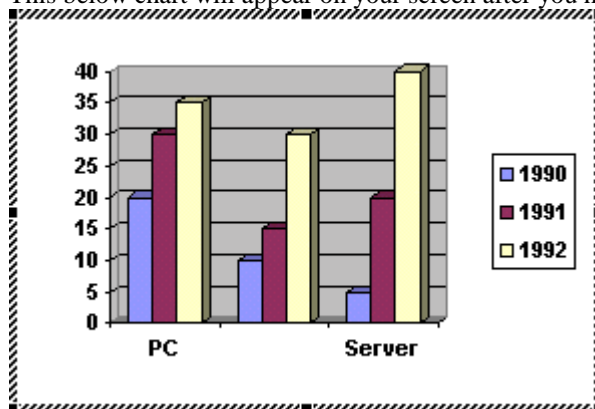
Step 3

Now you could start entering the data in the Datasheet, but you must delete the data in the Datasheet, first.

		A	B	C	D	E
		1st Qtr	2nd Qtr	3rd Qtr	4th Qtr	
1	East	20.4	27.4	90	20.4	
2	West	30.6	38.6	34.6	31.6	
3	North	45.9	46.9	45	43.9	
4						

Step 4

This below chart will appear on your screen after you have finished entering the data.

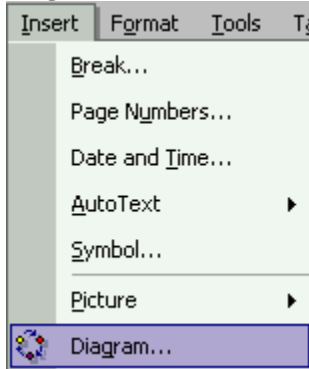


How to insert the Diagram

To insert the Diagram

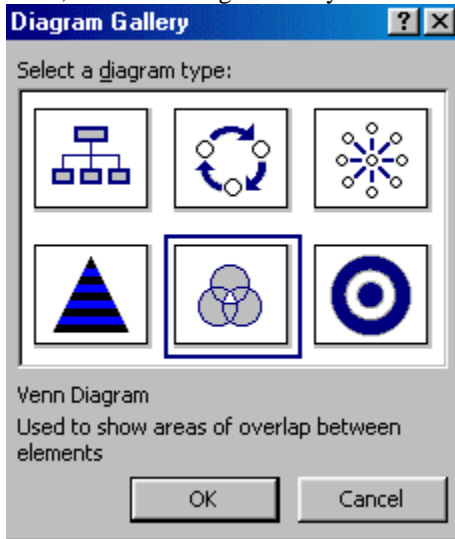
Step 1

To insert the diagram, first, you need to use the mouse to open the **Insert** menu and then click on the **Diagram** command.



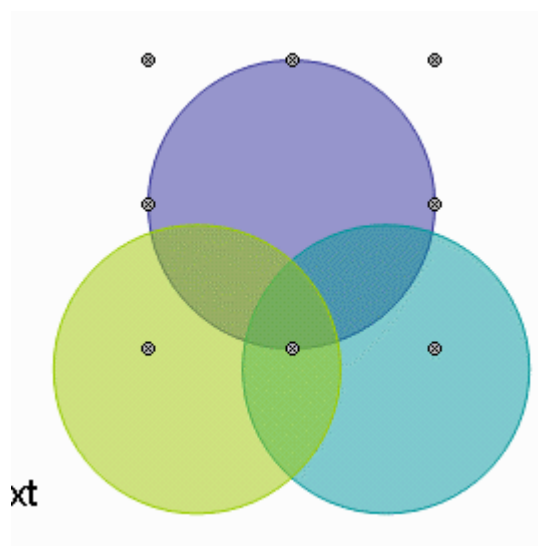
Step 2

Then, select the Diagram that you want to insert and later click on the **Ok** button.



Step 3

Finally, you will see the diagram has been inserted in the document.



How to insert the text box

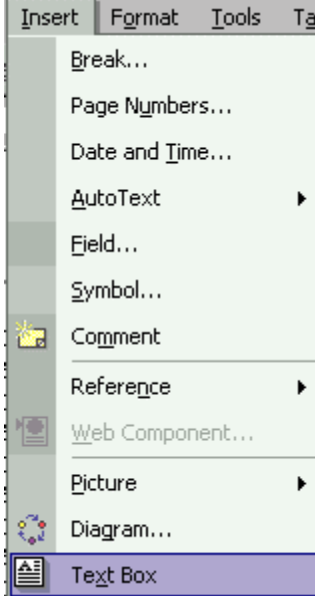
To insert the text box

Step 1

To insert the text box, first, you need to place the insertion point to where you would like it to be inserted in the document.

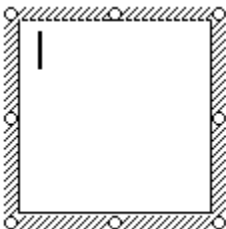
Step 2

After that, just use the mouse to open the **Insert** menu and then click on the **Text Box** command.



Step 3

Finally, you could start entering the text in the text box.



How to insert the Animation Schemes

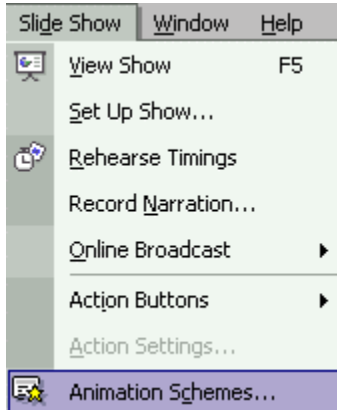
To insert the Animation Schemes

Step 1

To insert the animation schemes, first, you must select the page that you want to insert the Animation.

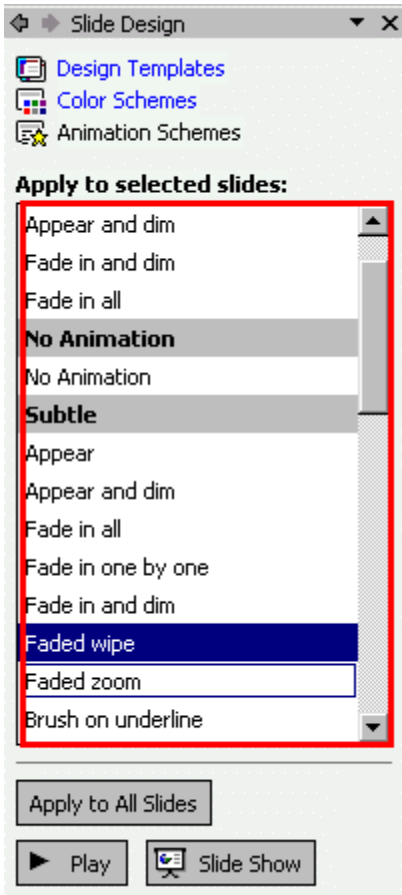
Step 2

Later, just use the mouse to open the **Slide Show** menu and then click on the **Animation Schemes** command.



Step 3

Finally, you could start selecting the slides that you want to apply.



How to insert the Slide Transition

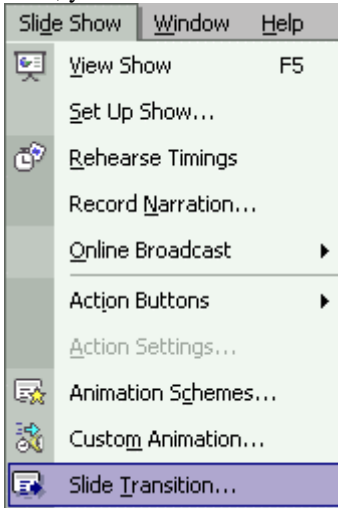
To insert the Slide Transition

Step 1

To insert the slide transition, you have to select the page that you want it to be inserted.

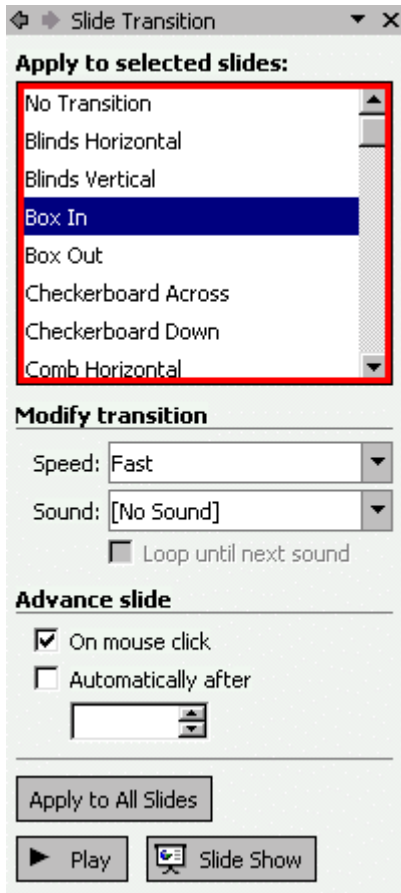
Step 2

Next, you have to use the mouse to open the **Slide Show** menu and then click on the **Slide Transition**.



Step 3

Now, you could start selecting the slides that you want.

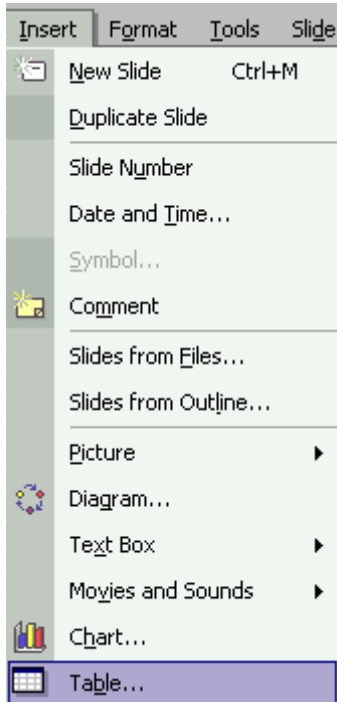


How to insert the table

To insert the table

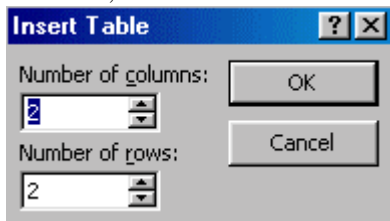
Step 1

To insert the table, first, you must use the mouse to open the **Insert** menu and then click on the **Table** command.



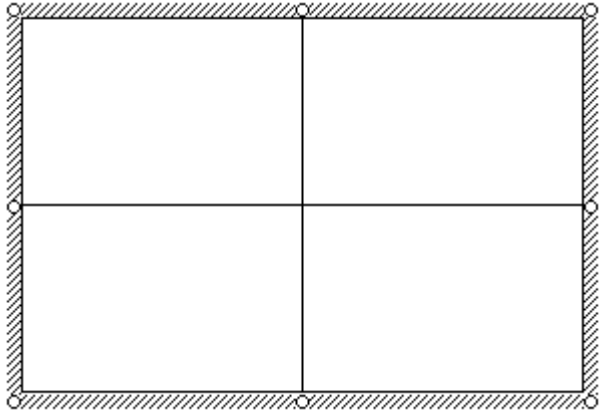
Step 2

After that, enter the number of the columns and rows that you want and then click on the **Ok** button.



Step 3

This below table will appear on your screen after you have selected the right columns and rows.



How to insert the movies file

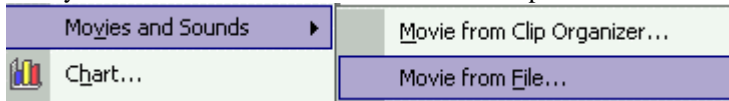
To insert the movies file

Step 1

To insert the movies file, first, you need to place the insertion point to where you would like it be inserted.

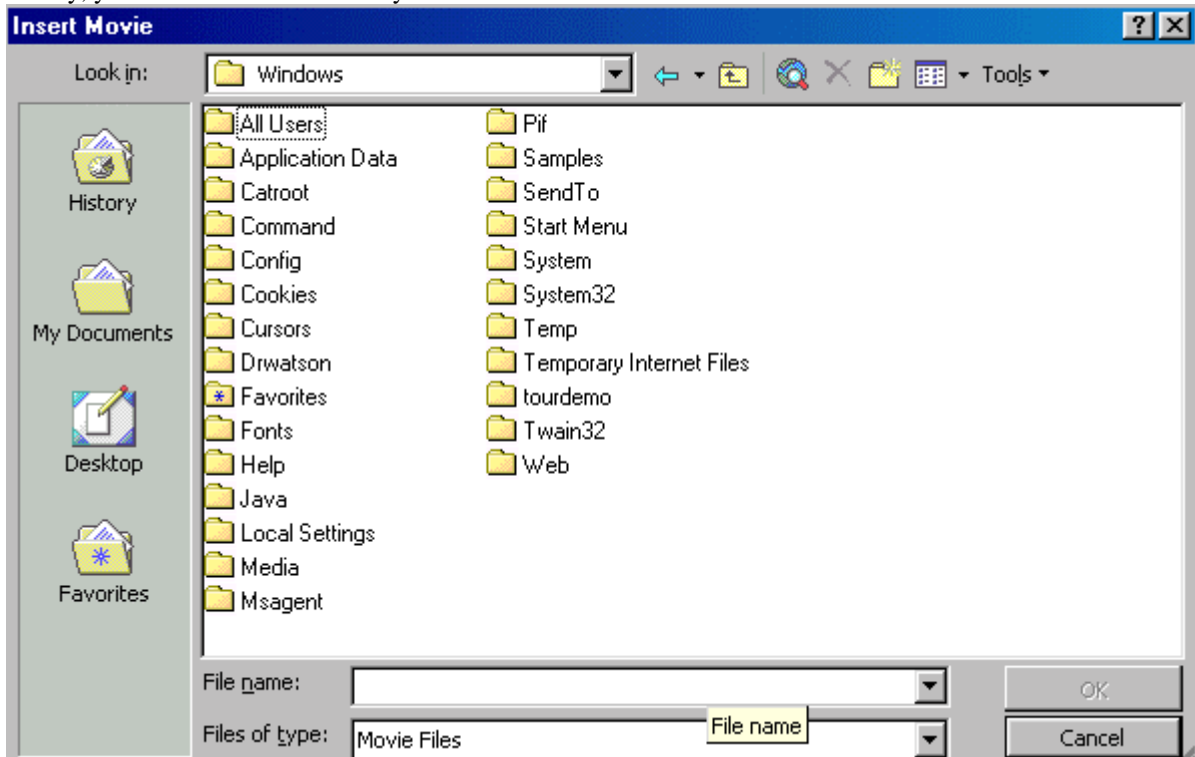
Step 2

Next, you need to use the mouse to open the **Insert** menu and then open the **Movies and Sounds** option. Now you need to click on the **Movie from File** option.



Step 3

Finally, you must select the file that you want to insert and then click the **Ok** button.



How to insert the sound in the presentation

To insert the sound in the presentation

Step 1

To insert the sound in the presentation, first you need to place the insertion point to where you would like it to be inserted.

Step 2

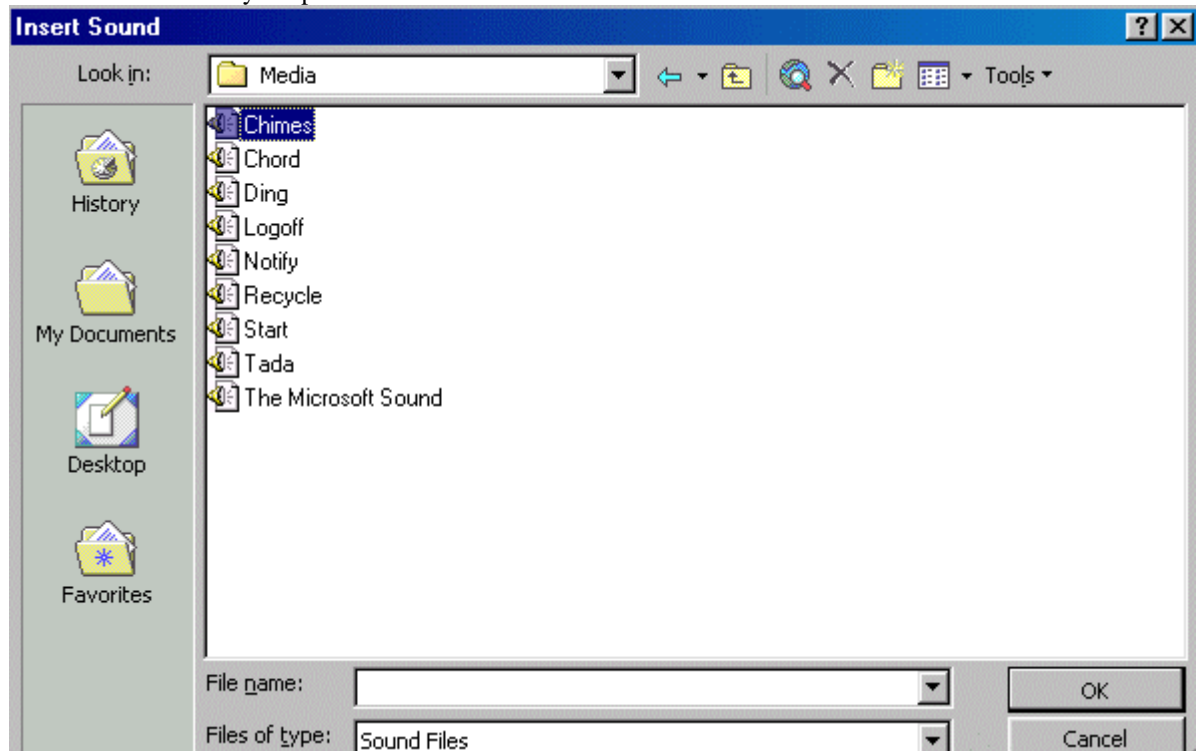
Next, you have to use the mouse to open the **Insert** menu and then open the **Movies and Sounds** option.

Later, click on the **Sound from File** option.



Step 3

Finally, you have to select the sound that you want it to be inserted in the presentation and then click on the **Ok** button as shown by the picture below.



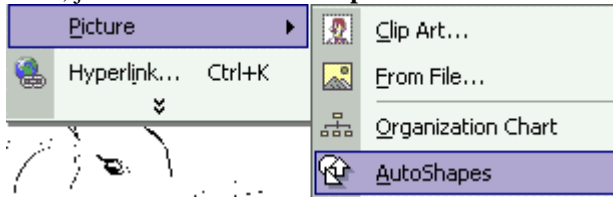
How to work with Draw

How to draw the line

To draw the line

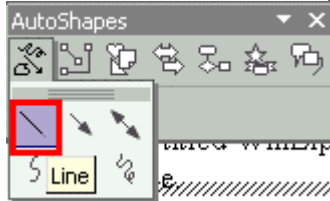
Step 1

To draw the line, you need to use the mouse to open the **Insert** menu and then open the **Picture** sub menu. Later, just click on the **AutoShapes** command.



Step 2

Now, choose the **Line** in the option menu.



Step 3

Finally, use the mouse to drag and draw the line.

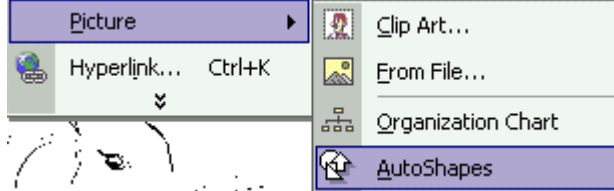


How to draw the Arrow Line

To draw the Arrow Line

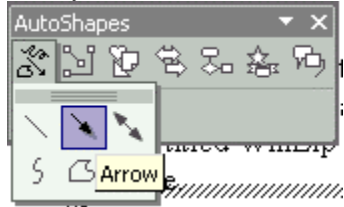
Step 1

To draw the arrow line, first, you must use the mouse open the **Insert** menu and then open the **Picture** sub menu. Later, you need to click on the **AutoShapes** command.



Step 2

Now, you need to choose the **Arrow** in the option menu.



Step 3

Finally, you have to use the mouse to drag and draw the Arrow.

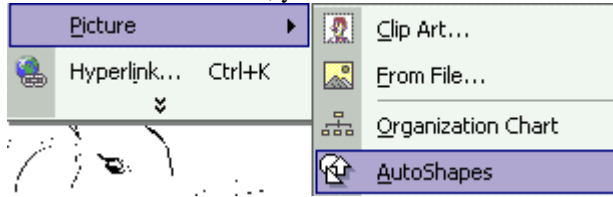


How to draw the Double Arrow

To draw the Double Arrow

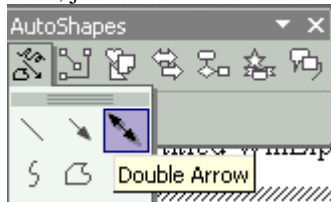
Step 1

To draw the double arrow, first you have to use the mouse to open the **Insert** menu and then open the **Picture** sub menu. Later, you need to click on the **AutoShapes** command.



Step 2

Now, just choose the **Double Arrow** in the option menu.



Step 3

Finally, use the mouse to drag and draw the Arrow.



How to draw the Curve

To draw the Curve

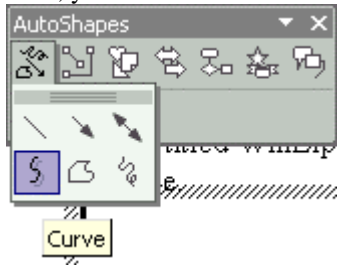
Step 1

To draw the curve, first, you have to use the mouse to open the **Insert** menu and then open the **Picture** sub menu. Now, click on the **AutoShapes** command.



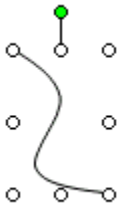
Step 2

Next, you need to choose the **Curve** in the option menu.



Step 3

After that, you have to use the mouse to drag start and end point. When you have finished, press the **ESC** button.

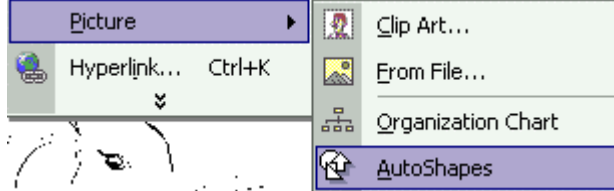


How to draw the Freeform

To draw the Freeform

Step 1

To draw the freeform, you need to use the mouse to open the **Insert** menu and then open the **Picture** sub menu. Later, you need to click on the **AutoShapes** command.



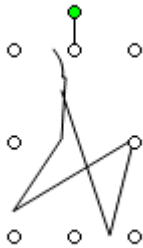
Step 2

Now you must choose the **Freeform** in the option menu.



Step 3

Finally, you just have to use the mouse to drag and draw the line. When you have finished, press the **ESC** button.

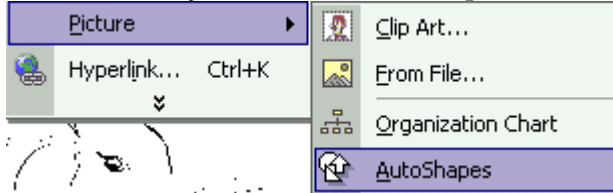


How to draw the Scribble

To draw the Scribble

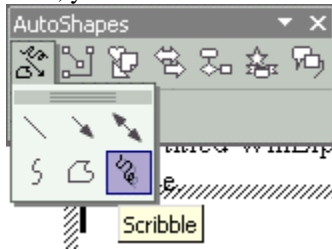
Step 1

To draw the scribble, first, you have to use the mouse to open the **Insert** menu and then open the **Picture** sub menu. Later, just click on the **AutoShapes** command.



Step 2

Now, you have to choose the **Scribble** in the option menu.



Step 3

Finally, you have to use the mouse to drag and draw the line.



How to draw the Straight Connector

To draw the Straight Connector

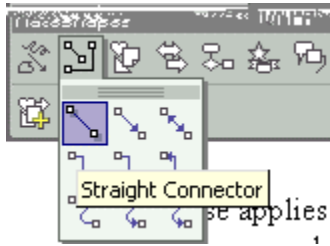
Step 1

To draw the straight connector, first, you have to use the mouse to open the **Insert** menu and then open the **Picture** sub menu. Later, you need to click on the **AutoShapes** command.



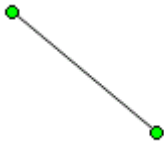
Step 2

Next, click on the **Connector** command in the **AutoShapes** menu bar and then choose the **Straight Connector**.



Step 3

Finally, you have to use the mouse to draw the start and end point.



How to draw the Straight Arrow Connector

To draw the Straight Arrow Connector

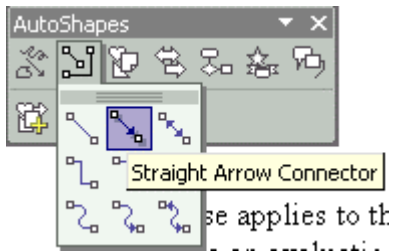
Step 1

To draw the straight Arrow Connector, you need to use the mouse to open the **Insert** menu and then open the **Picture** sub menu. Later, click on the **AutoShapes** command.



Step 2

Now, just click on the **Connector** command in the **AutoShapes** menu bar and then choose the **Straight Arrow Connector**.



Step 3

Finally, you need to use the mouse to draw the start and end point.



How to draw the Straight Double-Arrow Connector

To draw the Straight Double-Arrow Connector

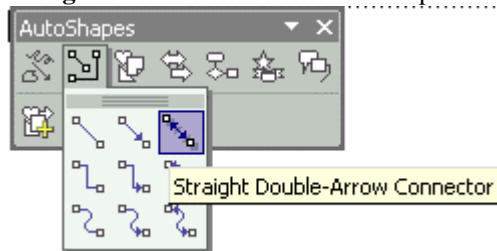
Step 1

To draw the straight double-arrow connector, first you need to use the mouse to open the **Insert** menu and then open the **Picture** sub menu. Later, click on the **AutoShapes** command.



Step 2

Next, you need to click on the **Connector** command in the **AutoShapes** menu bar and then choose the **Straight Double-Arrow Connector** option.



Step 3

Finally, just use the mouse to draw the start and end point.

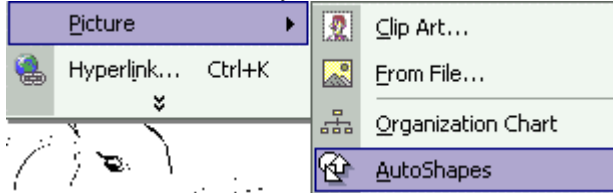


How to draw the Elbow Connector

To draw the Elbow Connector

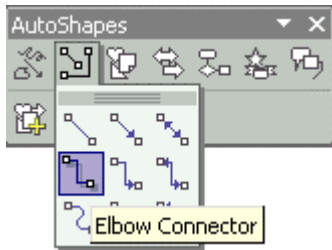
Step 1

To draw the elbow connector, first, you have to use the mouse to open the **Insert** menu and then open the **Picture** sub menu. Later, you must click on the **AutoShapes** command.



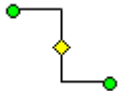
Step 2

After that, you need to click on the **Connector** command in the **AutoShapes** menu bar and then choose the **Elbow Connector**.



Step 3

Finally, use the mouse to draw the start and end point.

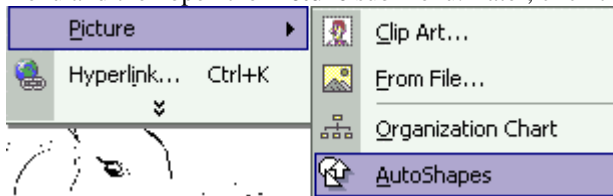


How to draw the Elbow Arrow Connector

To draw the Elbow Arrow Connector

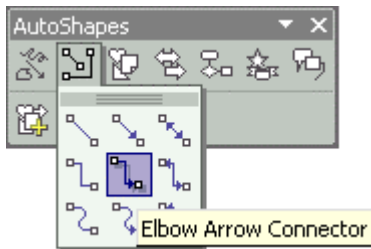
Step 1

If you would like to draw the elbow arrow connector, first you have to use the mouse to open the **Insert** menu and then open the **Picture** sub menu. Later, click the **AutoShapes** command.



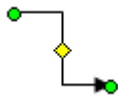
Step 2

Next, you need to click on the **Connector** command in the **AutoShapes** menu bar and then choose the **Elbow Arrow Connector**.



Step 3

Finally, use the mouse to draw the start and end point.

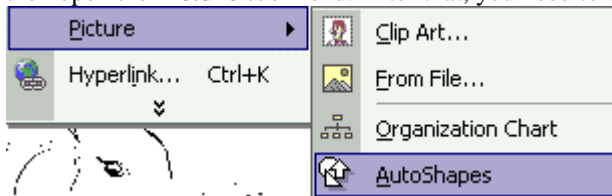


How to draw the Elbow Double-Arrow Connector

To draw the Elbow Double-Arrow Connector

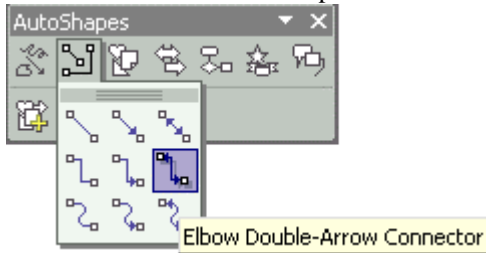
Step 1

To draw the elbow double-arrow connector, first you need to use the mouse to open the **Insert** menu and then open the **Picture** sub menu. After that, you need to click on the **AutoShapes** command.



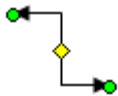
Step 2

After that, click on the **Connector** command in the **AutoShapes** menu bar and then choose the **Elbow Double-Arrow Connector** option.



Step 3

Finally, use the mouse to draw the start and end point.

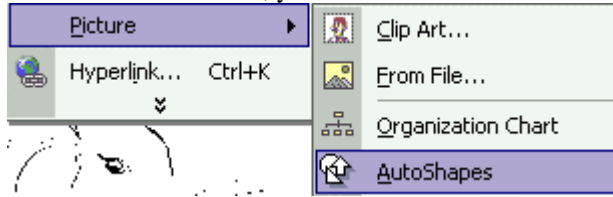


How to draw the Curved Connector

To draw the Curved Connector

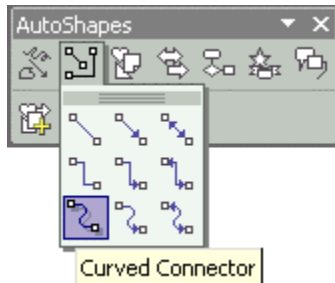
Step 1

To draw the curved connector, you need to use the mouse to open the **Insert** menu and then open the **Picture** sub menu. Next, you have to click on the **AutoShapes** command.



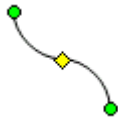
Step 2

After that, just click on the **Connector** command in the **AutoShapes** menu bar and then choose the **Curved Connector**.



Step 3

Finally, you need to use the mouse to draw the start and end point.

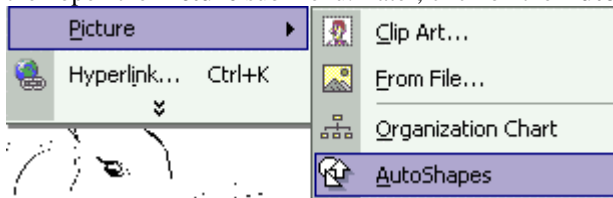


How to draw the Curved Arrow Connector

To draw the Curved Arrow Connector

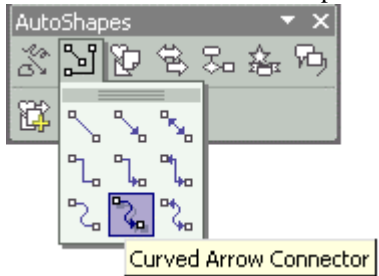
Step 1

To draw the curved arrow connector, the first thing to do is to use the mouse to open the **Insert** menu and then open the **Picture** sub menu. Later, click on the **AutoShapes** command.



Step 2

Next, you have to click on the **Connector** command in the **AutoShapes** menu bar and then choose the **Curved Arrow Connector** option.



Step 3

Finally, you must use the mouse to draw the start and end point.



How to draw the Curved Double-Arrow Connector

To draw the Curved Double-Arrow Connector

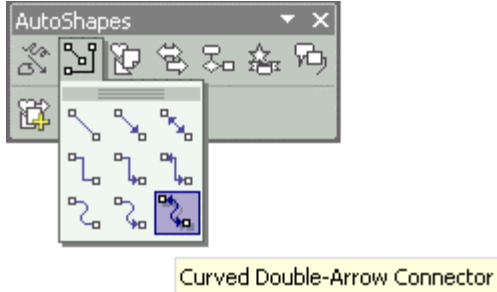
Step 1

If you would like to draw the curved double-arrow connector, you must use the mouse to open the **Insert** menu first, and then open the **Picture** sub menu. Next, you need to click the **AutoShapes** command.



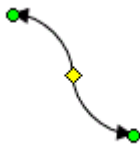
Step 2

After that, just click on the **Connector** command in the **AutoShapes** menu bar and then choose the **Curved Double-Arrow Connector** option.



Step 3

Finally, use the mouse to draw the start and end point.

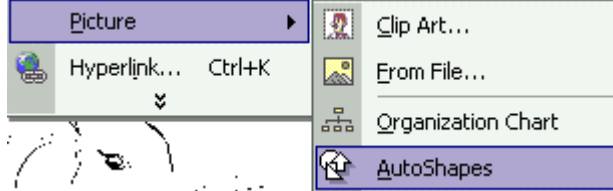


How to draw the Rectangle

To draw the Rectangle

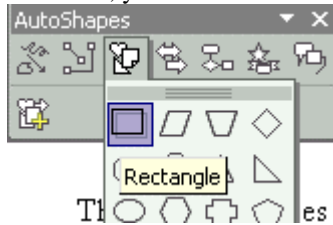
Step 1

To draw the rectangle, you must use the mouse to open the **Insert** menu and then open the **Picture** sub menu. Later, you need to click on the **AutoShapes** command.



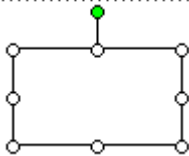
Step 2

After that, you need to click on the **Basic shapes** command and then choose the **Rectangle** option.



Step 3

Finally, you have to use the mouse to drag and draw the rectangle.

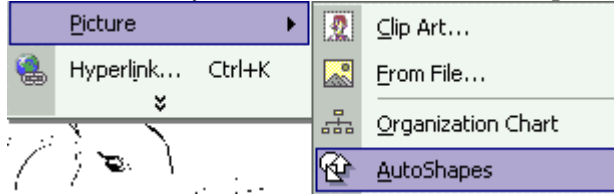


How to draw the Parallelogram

To draw the Parallelogram

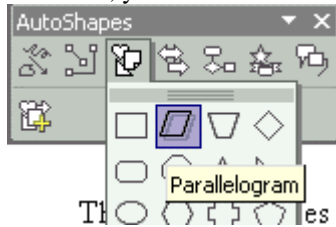
Step 1

To draw the parallelogram, you ought to use the mouse to open the **Insert** menu and then open the **Picture** sub menu. Later, you need to click on the **AutoShapes** command.



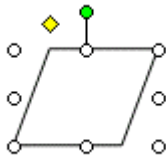
Step 2

After that, you need to click on the **Basic shapes** command and then choose the **Parallelogram** option.



Step 3

Finally, just use the mouse to drag and draw the Parallelogram.



How to draw the Trapezoid

To draw the Trapezoid

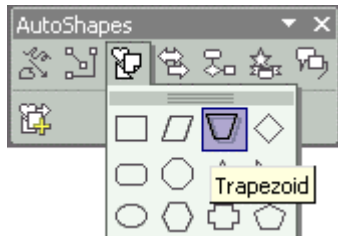
Step 1

If you would like to draw the trapezoid, the first thing to do is to use the mouse to open the **Insert** menu and then open the **Picture** sub menu. Next, you need to click on the **AutoShapes** command.



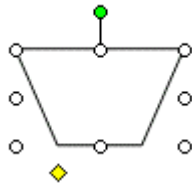
Step 2

After that, just click on the Basic shapes command and then choose the **Trapezoid** as shown by the picture below.



Step 3

Finally, just use the mouse to drag and draw the Trapezoid.

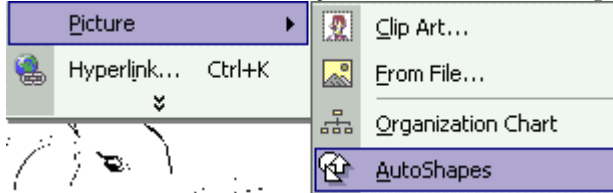


How to draw the Diamond

To draw the Diamond

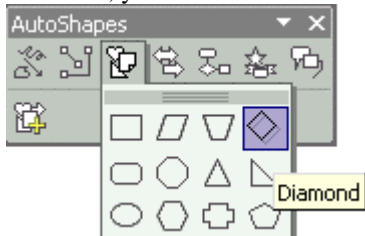
Step 1

If you wish to draw the diamond, first, you need to use the mouse to open the **Insert** menu and then open the **Picture** sub menu. Later, just click on the **AutoShapes** command.



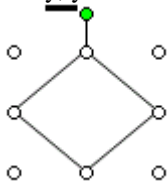
Step 2

After that, you need to click on the **Basic shapes** command and then choose the **Diamond** option.



Step 3

Finally, you need to use the mouse to drag and draw the Diamond.



How to draw the Rounded Rectangle

To draw the Rounded Rectangle

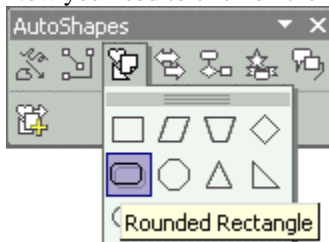
Step 1

To draw the rounded rectangle, first, you need to use the mouse to open the **Insert** menu and then open the **Picture** sub menu. Later, just Click on the **AutoShapes** command as the picture below shows.



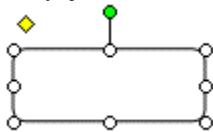
Step 2

Now you need to click on the **Basic shapes** command and then choose the **Rounded Rectangle** option.



Step 3

Finally, just use the mouse to drag and draw the Rounded Rectangle.

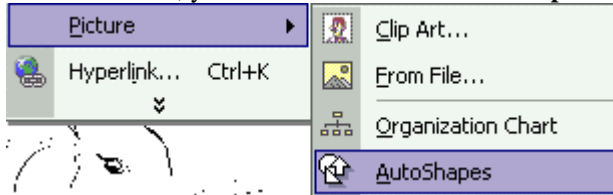


How to draw the Octagon

To draw the Octagon

Step 1

To draw the octagon, first, you have to use the mouse to open the **Insert** menu and then open the **Picture** sub menu. Later, you need to click on the **AutoShapes** command.



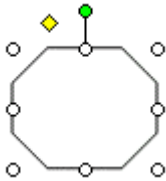
Step 2

After that, just click on the **Basic shapes** command and then choose the **Octagon** option.



Step 3

Finally, use the mouse to drag and draw the Octagon.

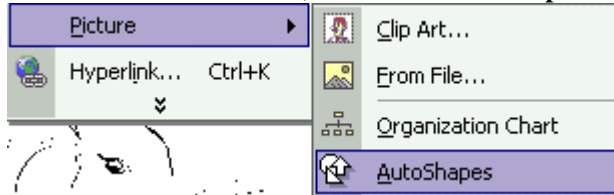


How to draw the Hexagon

To draw the Hexagon

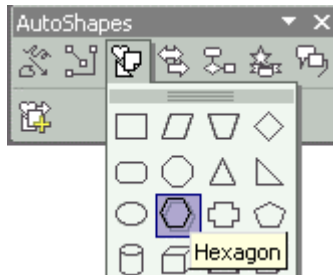
Step 1

If you wish to draw the hexagon, first, you have to use the mouse to open the **Insert** menu and then open the **Picture** sub menu. Next, click on the **AutoShapes** command.



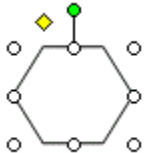
Step 2

Later, you must click on the **Basic shapes** command and then choose the **Hexagon** as shown by the picture below.



Step 3

Finally, use the mouse to drag and draw the Hexagon.



How to draw the Can

To draw the Can

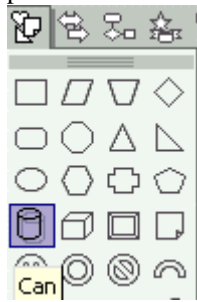
Step 1

To draw the can, first you have to use the mouse to open the **Insert** menu and then open the **Picture** sub menu. Later, you need to click on the **AutoShapes** command.



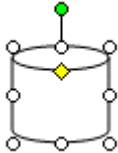
Step 2

After that, just click on the **Basic shapes** command and then choose the **Can** option as shown by the picture below.



Step 3

Finally, use the mouse to drag and draw the Can.

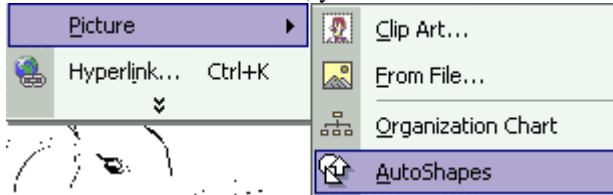


How to draw the Cube

To draw the Cube

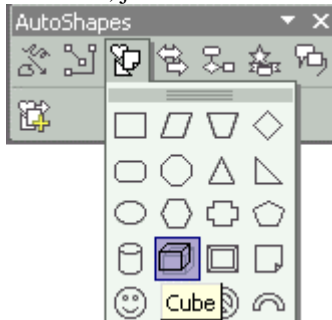
Step 1

If you would like to draw the cube, first you need to use the mouse to open the **Insert** menu and then open the **Picture** sub menu. Later, you need to click on the **AutoShapes** command.



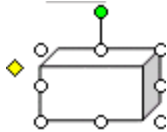
Step 2

After that, just click on the **Basic shapes** command and then choose the **Cube** option.



Step 3

Finally, use the mouse to drag and draw the Cube.

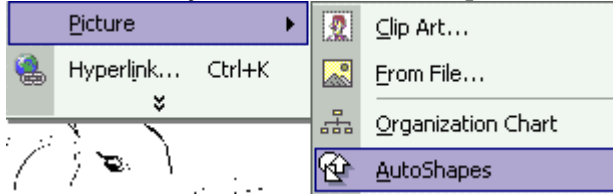


How to draw the Right Arrow

To draw the Right Arrow

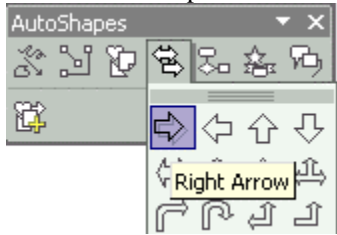
Step 1

To draw the right arrow, you have to use the mouse to open the **Insert** menu first and then open the **Picture** sub menu. Later, just click on the **AutoShapes** command.



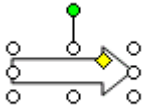
Step 2

After that, you must click on the **Block Arrow** in the **AutoShapes** menu and then choose the **Right Arrow** as marked in the picture below..



Step 3

Finally, you need to use the mouse to drag and draw the Right Arrow.

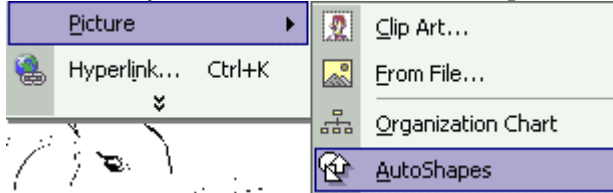


How to draw the Left Arrow

To draw the Left Arrow

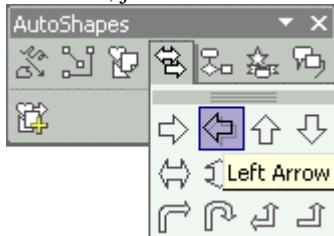
Step 1

To draw the left arrow, you need to use the mouse to open the **Insert** menu and then open the **Picture** sub menu. Later, you need to click on the **AutoShapes** command.



Step 2

After that, just click on the **Block Arrow** in the **AutoShapes** menu and then choose the **Left Arrow**.



Step 3

Finally, you need to use the mouse to drag and draw the Left Arrow.

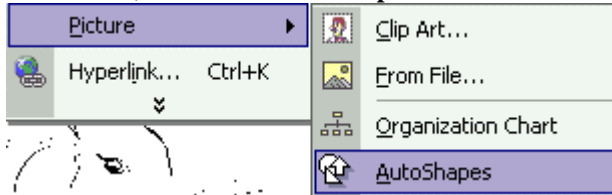


How to draw the Up Arrow

To draw the Up Arrow

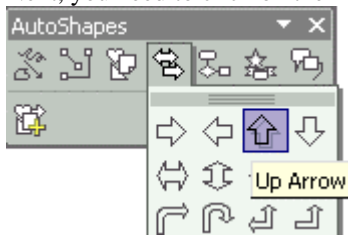
Step 1

To draw the up arrow, you must use the mouse to open the **Insert** menu and then open the **Picture** sub menu. Later, click on the **AutoShapes** command.



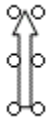
Step 2

Next, you need to click on the **Block Arrow** in the **AutoShapes** menu and then choose the **Up Arrow**.



Step 3

Finally you just need to use the mouse to drag and draw the Up Arrow.

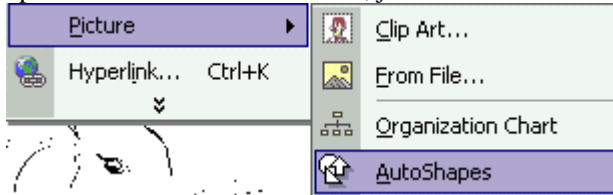


How to draw the Down Arrow

To draw the Down Arrow

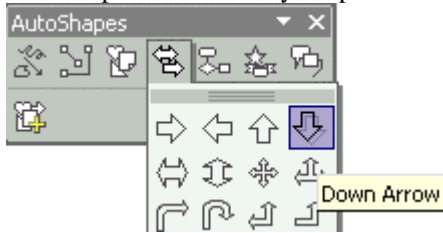
Step 1

If you would like to draw the down arrow, you need to use the mouse to open the **Insert** menu and then open the **Picture** sub menu. Later, just click on the **AutoShapes** command.



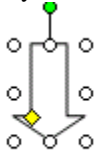
Step 2

After that, you need to click on the **Block Arrow** in the **AutoShapes** menu and then choose the **Down Arrow** option as shown by the picture below.



Step 3

Finally, use the mouse to drag and draw the Down Arrow.

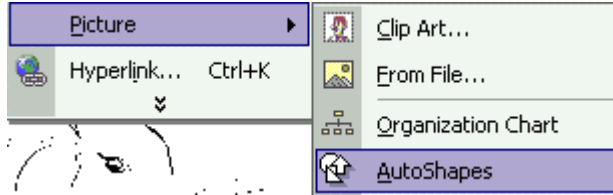


How to draw the Bent Arrow

To draw the Bent Arrow

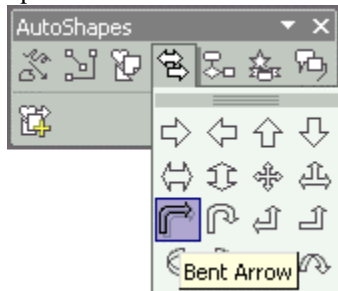
Step 1

If you would like to draw the bent arrow, the first thing that you have to do first is to use the mouse to open the **Insert** menu and then open the **Picture** sub menu. Later, you need to click on the **AutoShapes** command.



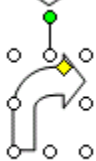
Step 2

Now, you must click on the Block Arrow in the **AutoShapes** menu and then choose the **Bent Arrow** option.



Step 3

Finally, you need to use the mouse to drag and draw the Bent Arrow.

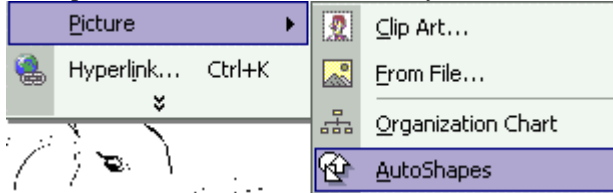


How to draw the Left-Up Arrow

To draw the Left-Up Arrow

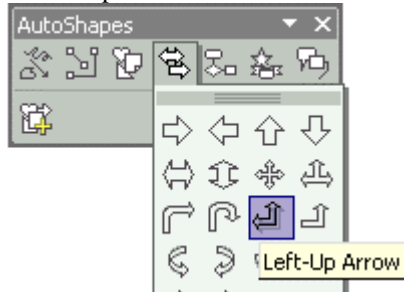
Step 1

If you would like to draw the left-up arrow, first, you need to use the mouse to open the **Insert** menu and then open the **Picture** sub menu. Next, you need to click on the **AutoShapes** command.



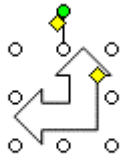
Step 2

After that, you have to click on the **Block Arrow** in the **AutoShapes** menu and then choose the **Left-up Arrow** option as follows.



Step 3

Finally, you need to use the mouse to drag and draw the Left-up Arrow.

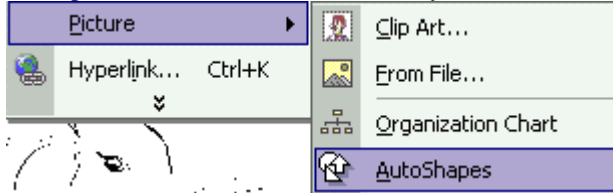


How to draw the Flowchart: Process

To draw the Flowchart: Process

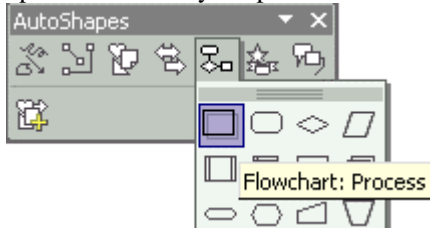
Step 1

If you wish to draw the flowchart: Process, first, you need to use the mouse to open the **Insert** menu and then open the **Picture** sub menu. Later, you need to click on the **AutoShapes** command.



Step 2

After that, just click on the **Flowchart** in the **AutoShapes** menu and then choose the **Flowchart: Process** option as shown by the picture below.



Step 3

Finally, you need to use the mouse to drag and draw the Flowchart: Process.

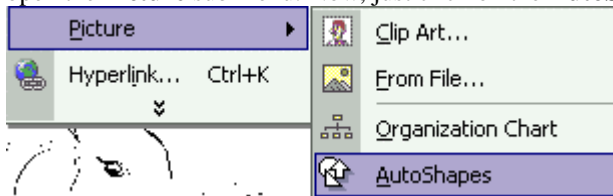


How to draw the Flowchart: Alternate Process

To draw the Flowchart: Alternate Process

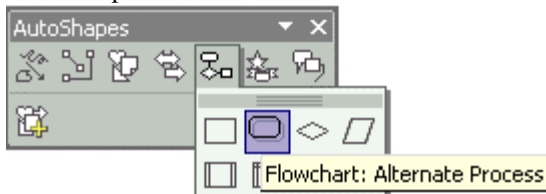
Step 1

To draw the flowchart: Alternate Process, first you have to use the mouse to open the **Insert** menu and then open the **Picture** sub menu. Now, just click on the **AutoShapes** command.



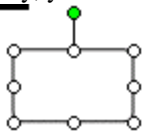
Step 2

After that, just click on the **Flowchart** in the **AutoShapes** menu and then choose the **Flowchart: Alternate Process** option.



Step 3

Finally, you have to use the mouse to drag and draw Flowchart: Alternate Process.



How to draw the starts and banners

To draw the starts and banners

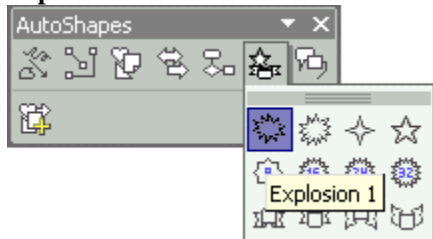
Step 1

To draw the starts and banners, first, you have to use the mouse to open the **Insert** menu and then open the **Picture** sub menu. Then, you need to click on the **AutoShapes** command.



Step 2

After that, just click on the **Starts and Banners** option in the **AutoShapes** menu and then select the **Explosion 1**.



Step 3

Finally, just use the mouse to drag and draw the Explosion 1



How to draw the callouts

To draw the callouts

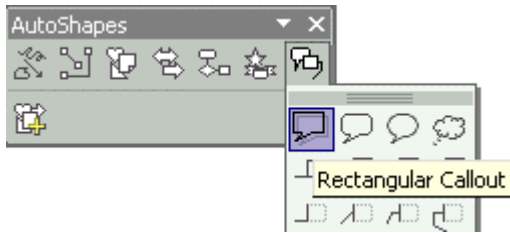
Step 1

If you need to draw the callouts, you have to use the mouse open the **Insert** menu and then open the **Picture** sub menu. Later, just click on the **AutoShapes** command.



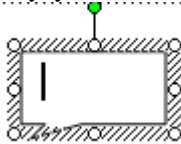
Step 2

After that, you need to click on the **Callout** in the **AutoShapes** menu and then choose the **Rectangular Callout**.



Step 3

Finally, you need to use the mouse to drag and draw the Rectangular Callout



Index

1	
1-per-page.....	23
1-per-page handouts.....	23
1-per-page handoutsTo show.....	23
2	
2-per-page.....	24
2-per-page handouts.....	24
2-per-page handoutsTo show.....	24
positioning.....	24
3	
3-per-page.....	25
3-per-page handouts.....	25
3-per-page handoutsTo show.....	25
positioning.....	25
4	
4-per-page.....	26
4-per-page handouts.....	26
4-per-page handoutsTo show.....	26
positioning.....	26
9	
9-per-page.....	27
9-per-page handouts.....	27
9-per-page handoutsTo show.....	27
positioning.....	27
A	
Add.....	46
text.....	46
All.....	39
All button.....	41
Apply.....	39, 41
Alternate Process.....	95
Alternate ProcessTo.....	95
Animation.....	56
Animation Schemes.....	56
Animation SchemesTo insert.....	56
insert.....	56
Apply.....	39, 41
Apply button.....	39, 41
All.....	39
All button.....	41
Arrow.....	65, 66

Arrow Connector	71
Arrow Line	65
Arrow LineTo draw	65
draw	65, 66
AutoShapes . 49, 64, 65, 66, 67, 68, 69, 70, 71, 72, 73, 74, 75, 76, 77, 78, 79, 80, 81, 82, 83, 84, 85, 86, 87, 88, 89, 90, 91, 92, 93, 94, 95, 96, 97	
AutoShapes menu	88, 89, 90, 91, 92, 93, 94, 95, 96, 97
AutoShapes menu bar	49, 70, 71, 72, 73, 74, 75, 76, 77, 78
show	49
AutoShapes menu barTo show	49
Click	83
show	49

B

Banners	96
BannersTo draw	96
starts	96
Basic	79, 80, 81, 82, 83, 84, 85, 86, 87
Bent Arrow	92
choose	92
draw	92
Bent ArrowTo draw	92
draw	92
Block Arrow	88, 89, 90, 91, 92, 93

C

Callout	97
Callout menu	49
open	49
Callouts	97
CalloutsTo draw	97
choose	86
draw	86, 97
CanTo draw	86
draw	86
Change	50
Font	50
Chart	52
insert	52
presentationTo insert	52
Choose .. 42, 64, 66, 68, 69, 70, 71, 72, 73, 74, 75, 76, 77, 78, 79, 80, 81, 82, 83, 84, 85, 86, 87, 88, 89, 90, 91, 92, 93, 94, 95, 97	
Choose Edit>Past	42
AutoShapes	83
Bent Arrow	92
Can	86
Copy	42
Cube	87
Curved Arrow Connector	77
Curved Connector	76
Curved Double-Arrow Connector	78
Diamond	82
Double Arrow	66
Down Arrow	91
Elbow Arrow Connector	74

Elbow Connector	73
Elbow Double-Arrow Connector	75
Flowchart	94, 95
Freeform	68
Hexagon	85
Left Arrow	89
Left-up Arrow	93
Line	64
Octagon	84
Parallelogram	80
Rectangle	79
Rectangular Callout	97
Right Arrow	88
Rounded Rectangle	83
Scribble	69
Straight Arrow Connector	71
Straight Connector	70
Straight Double-Arrow Connector	72
Trapezoid	81
Up Arrow	90
Clip Art	42
Clip ArtTo insert	42
insert	42
Clip Organizer	42
Close	19
Close Master View	19
Master ViewTo close	19
Connector	70, 71, 72, 73, 74, 75, 76, 77, 78
Copy	42
choose	42
Cube	87
choose	87
draw	87
CubeTo draw	87
draw	87
Curve	67
Curved Arrow Connector	77
choose	77
Curved Arrow ConnectorTo draw	77
draw	77
Curved Connector	76
choose	76
Curved ConnectorTo draw	76
draw	76
Curved Double-Arrow Connector	78
choose	78
Curved Double-Arrow ConnectorTo draw	78
draw	78
CurveTo draw	67
draw	67
 D	
Datasheet	52
Date	41
insert	41
select	41

TimeTo insert	41
Delete	15

Octagon.....	84
OctagonTo draw	84
Parallelogram.....	80
ParallelogramTo draw	80
RectangleTo draw.....	79
Rectangular Callout	97
Right Arrow	88
Right ArrowTo draw.....	88
Rounded Rectangle.....	83
Rounded RectangleTo draw	83
ScribbleTo draw	69
starts	96
Straight Arrow ConnectorTo draw	71
Straight ConnectorTo draw.....	70
Straight Double-Arrow ConnectorTo draw	72
Trapezoid	81
TrapezoidTo draw	81
Up Arrow.....	90
Up ArrowTo draw	90

E

Elbow Arrow Connector	74
choose.....	74
Elbow Arrow ConnectorTo draw	74
draw	74
Elbow Connector	73
choose.....	73
Elbow ConnectorTo draw.....	73
draw	73
Elbow Double-Arrow Connector	75
choose.....	75
Elbow Double-Arrow ConnectorTo draw	75
draw	75
ESC button.....	67, 68
press	67, 68
Explosion	96
draw	96
select.....	96

F

Flowchart	94, 95
choose.....	94, 95
draw	94, 95
Font.....	50
change.....	50
Footer dialog	41
Footer window	39
Freeform.....	68
choose.....	68
FreeformTo draw	68
draw	68
From File	44

H

Handout Master.....	21, 23, 24, 25, 26, 27, 28
---------------------	----------------------------

Handout Master View menu	23, 24, 25, 26, 27, 28
see	21
show	21
Handout MasterTo show	21
show	21
Header	39, 41
Hexagon	85
choose	85
draw	85
HexagonTo draw	85
draw	85

I

Insert	38, 39, 41, 42, 44, 47, 50, 52, 53, 55, 56, 58, 60, 62, 63
Insert button	44
Insert menu 38, 39, 41, 42, 44, 45, 49, 50, 52, 53, 55, 60, 62, 63, 64, 65, 66, 67, 68, 69, 70, 71, 72, 73, 74, 75, 76, 77, 78, 79, 80, 81, 82, 83, 84, 85, 86, 87, 88, 89, 90, 91, 92, 93, 94, 95, 96, 97	
open ... 38, 39, 41, 42, 45, 49, 50, 52, 53, 55, 60, 62, 63, 64, 65, 66, 67, 68, 69, 70, 71, 72, 73, 74, 75, 76, 77, 78, 79, 80, 81, 82, 83, 84, 85, 86, 87, 88, 89, 90, 91, 92, 93, 94, 95, 96, 97	
Insert New Slide Master	13
Insert new slide masterTo insert new slide master	13
Insert New Title Master	14
Insert New Title MasterTo insert New Title Master	14
Insert Organization ChartTo insert Organization Chart	45
Animation SchemesTo insert	56
chart	52
Clip ArtTo insert	42
Date	41
DiagramTo insert	53
movies fileTo insert	62
new shape	47
new slideTo insert	38
picture	44
slide numberTo insert	39
Slide TransitionTo insert	58
sound	63
tableTo insert	60
text boxTo insert	55
WordArt	50
WordArtTo insert	50

L

Layout	18, 48
LayoutTo	48
select	48
Left Arrow	89
choose	89
draw	89
Left ArrowTo draw	89
draw	89
Left-Up Arrow	93
choose	93
draw	93
Left-Up ArrowTo draw	93
draw	93

Line	64
Line Callout	49
choose	64
draw	49, 64

M

Master	11, 13, 14, 15, 16, 17, 18, 19, 29
Master Layout	18
Master layoutTo master layout	18
Master menu	21, 23, 24, 25, 26, 27, 28
open	21, 23, 24, 25, 26, 27, 28
Master page	17
Master pageTo rename	17
rename	17
Master View	19
Master ViewTo close	19
close	19
open	11, 13, 14, 15, 16, 17, 18, 19, 29
Microsoft Clip Organizer window	42
Movies	62, 63
Movies file	62
Movies fileTo insert	62
insert	62
open	62, 63

N

New shape	47
insert	47
Organization ChartTo insert	47
New slide	38
New slideTo insert	38
insert	38
New Title Master	14
see	14
Normal	9
Normal page display	9
Normal page displayTo view	9
view	9
Notes Master	29, 31, 33
Notes Page	33
view	33
Notes PageTo view	33
view	33

O

Octagon	84
choose	84
draw	84
OctagonTo draw	84
draw	84
Ok button	53, 60, 62, 63
One Page	38
Open 6, 9, 11, 13, 14, 15, 16, 17, 18, 19, 21, 23, 24, 25, 26, 27, 28, 29, 31, 33, 35, 36, 38, 39, 41, 42, 45, 49, 50, 52, 53, 55, 56, 58, 60, 62, 63, 64, 65, 66, 67, 68, 69, 70, 71, 72, 73, 74, 75, 76, 77, 78, 79, 80, 81, 82, 83, 84, 85, 86, 87, 88, 89, 90, 91, 92, 93, 94, 95, 96, 97	

Callout menu	49
Insert menu .. 38, 39, 41, 42, 45, 49, 50, 52, 53, 55, 60, 62, 63, 64, 65, 66, 67, 68, 69, 70, 71, 72, 73, 74, 75, 76, 77, 78, 79, 80, 81, 82, 83, 84, 85, 86, 87, 88, 89, 90, 91, 92, 93, 94, 95, 96, 97	
Master	11, 13, 14, 15, 16, 17, 18, 19, 29
Master menu	21, 23, 24, 25, 26, 27, 28
Movies	62, 63
Picture 45, 49, 50, 52, 64, 65, 66, 67, 68, 69, 70, 71, 72, 73, 74, 75, 76, 77, 78, 79, 80, 81, 82, 83, 84, 85, 86, 87, 88, 89, 90, 91, 92, 93, 94, 95, 96, 97	
Slide Show menu	56, 58
View menu	6, 9, 11, 13, 14, 15, 16, 17, 18, 19, 21, 23, 24, 25, 26, 27, 28, 29, 31, 33, 35, 36
Organization	47
Organization Chart	45, 46, 47
Organization Chart menu bar	47, 48
Organization ChartTo	46
Organization ChartTo insert	47
new shape	47
Outline	28
OutlineTo show	28

P

Parallelogram	80
choose	80
draw	80
ParallelogramTo draw	80
draw	80
Picture .. 42, 44, 45, 49, 50, 52, 64, 65, 66, 67, 68, 69, 70, 71, 72, 73, 74, 75, 76, 77, 78, 79, 80, 81, 82, 83, 84, 85, 86, 87, 88, 89, 90, 91, 92, 93, 94, 95, 96, 97	
insert	44
open ... 45, 49, 50, 52, 64, 65, 66, 67, 68, 69, 70, 71, 72, 73, 74, 75, 76, 77, 78, 79, 80, 81, 82, 83, 84, 85, 86, 87, 88, 89, 90, 91, 92, 93, 94, 95, 96, 97	
Positioning	24, 25, 26, 27
2-per-page	24
3-per-page	25
4-per-page	26
9-per-page	27
Presentation	52, 63
PresentationTo insert	52, 63
chart	52
sound	63
Preserve Master	16
Preserve master pageTo preserve master page	16
Press	67, 68
ESC button	67, 68
ProcessTo	94

R

Rectangle	79
choose	79
RectangleTo draw	79
draw	79
Rectangular Callout	97
choose	97
draw	97
Rename	17
Rename button	17

Rename Master	17
master pageTo rename	17
Right Arrow	88
choose	88
draw	88
Right ArrowTo draw	88
draw	88
Rounded Rectangle	83
choose	83
draw	83
Rounded RectangleTo draw	83
draw	83
Ruler	36
RulerTo show	36
show	36

S

Scribble	69
choose	69
ScribbleTo draw	69
draw	69
See	14, 21
Handout Master	21
New Title Master	14
Select	41, 48, 53, 96
Date	41
Diagram	53
Explosion	96
layoutTo	48
Show	21, 23, 24, 25, 26, 27, 28, 36, 49
Show Notes MasterTo show Notes Master	29
AutoShapes menu bar	49
AutoShapes menu barTo show	49
Handout Master	21
Handout MasterTo show	21
rulerTo show	36
Slide	39
Slide Master	11, 13, 14, 15, 16, 17, 18, 19
Slide Master View menu	14, 16, 17, 18, 19
Slide Master View menu bar	13, 15
Slide masterTo	15
Slide MasterTo view	11
delete	15
view	11
Slide number	39
Slide numberTo insert	39
insert	39
Slide show	31
Slide Show menu	56, 58
open	56, 58
Slide showTo work	31
Slide Sorter	6, 9, 11
Slide SorterTo view	6
view	6
Slide Transition	58
Slide TransitionTo insert	58

insert	58
Sound	62, 63
insert	63
presentationTo insert	63
Starts	96
bannersTo draw	96
draw	96
Straight Arrow Connector	71
choose	71
Straight Arrow ConnectorTo draw	71
draw	71
Straight Connector	70
choose	70
Straight ConnectorTo draw	70
draw	70
Straight Double-Arrow Connector	72
choose	72
Straight Double-Arrow ConnectorTo draw	72
draw	72

T

Table	60
TableTo insert	60
insert	60
Task Pane	35
Text	46
Text box	55
Text boxTo insert	55
add	46
insert	55
Time	41
TimeTo insert	41
Date	41
Trapezoid	81
choose	81
draw	81
TrapezoidTo draw	81
draw	81

U

Up Arrow	90
choose	90
draw	90
Up ArrowTo draw	90
draw	90

V

View	6, 9, 11, 33
View menu	6, 9, 11, 13, 14, 15, 16, 17, 18, 19, 21, 23, 24, 25, 26, 27, 28, 29, 31, 33, 35, 36
open	6, 9, 11, 13, 14, 15, 16, 17, 18, 19, 21, 23, 24, 25, 26, 27, 28, 29, 31, 33, 35, 36
View Task PaneTo view Task Pane	35
normal page displayTo view	9
Notes Page	33
Notes PageTo view	33
Slide MasterTo view	11

Slide SorterTo view	6
W	
WordArt	50
insert	50
WordArtTo insert.....	50
insert	50
Work	31